

# **Office of Research and Graduate Studies**

**2009**  **2010**

# **Annual Report**

**University of Florida  
College of Pharmacy**

# **Office of Research and Graduate Studies Staff**

**William J. Millard, Ph.D.**

Executive Associate Dean  
Professor, Department of Pharmacodynamics

**Deborah Bambarola**

Grants Specialist

# Table of Contents

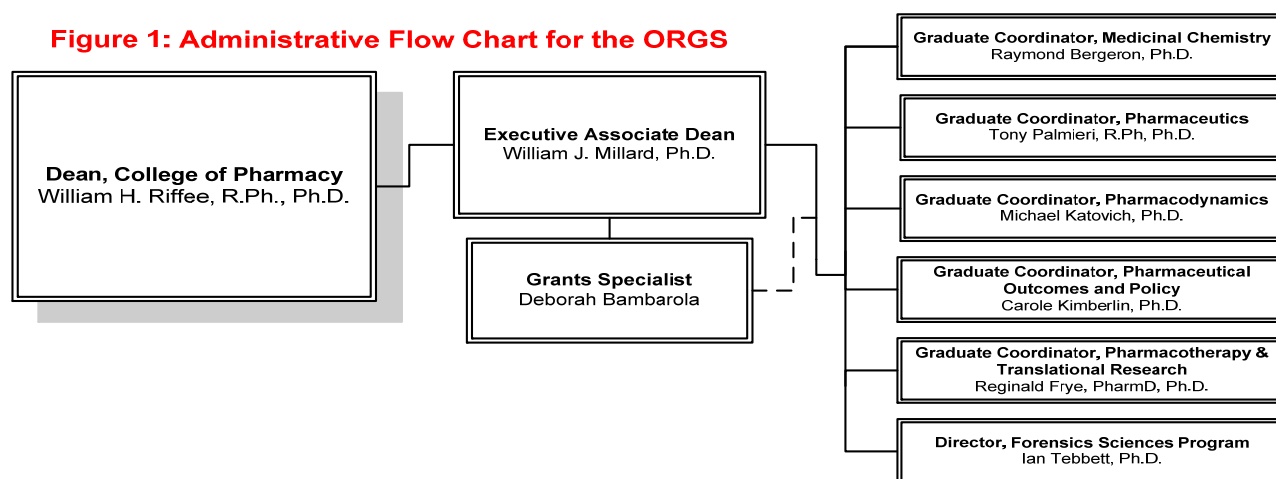
Section	Page
<b>Introduction</b> .....	1
<b>Graduate Education and Program Activities</b> .....	2
Graduate Programs in the College .....	2
Graduate Studies Committee Activities .....	3
College of Pharmacy Graduate Student Organization .....	3
Graduate Faculty, Graduate Student, Post-doctoral Fellow, Visiting Scholar and Exchange Student Demographics .....	3
PharmD/Ph.D. Students in Graduate Programs in the College of Pharmacy.....	8
FDA/CDER Students in the Master’s Program .....	9
Graduate Student Recruitment Activities .....	9
Exchange Students in the College of Pharmacy .....	9
Graduate Student Graduation Activities .....	10
Graduate Student Funding and Awards .....	15
Graduate Minority Activities and Awards.....	18
<b>Research Activities in the College of Pharmacy</b> .....	19
Grant and Contract Efforts and Funding .....	19
Licensing and Royalty Income .....	24
Graduate Student Research Activities .....	24
Professional Student Research Activities .....	25
Post-doctoral Fellow Research Activities and Awards.....	25
<b>U.S.-Thai Consortium Activities</b> .....	26
History of the U.S.-Thai Consortium.....	26
11 <sup>th</sup> U.S.-Thai Pharmacy Education Consortium Meeting .....	26
<b>ORGS Coordinated Events</b> .....	27
Post-baccalaureate Reception .....	27
Annual Research Showcase and Awards Recognition Day.....	27
<b>Other ORGS Activities</b> .....	29
Committee Assignments .....	29
Conferences Attended Related to ORGS Activity.....	30
<b>Appendices</b> .....	31
A= Letter to Graduate Applicants.....	32
B= Complete Listing of Extramural Support by Department and Faculty .....	34
C= 23 <sup>rd</sup> Annual Research Showcase and Awards Recognition Day Booklet .....	40

## Introduction

The Office of Research and Graduate Studies (ORGS) was established in the College of Pharmacy (COP) in 1989 as the major unit within the College responsible for the oversight of all aspects of the graduate programs (M.S. and Ph.D.) as well as research activities. Within the purview of these two major activities are a number of functions that are coordinated by ORGS personnel and make up the daily operations of the office.

The structure of the ORGS is outlined in **Figure 1**. Dr. William J. Millard, Professor in the Department of Pharmacodynamics, accepted the role as Associate Dean for Research and Graduate Studies on an acting basis in January 1995, and then on a permanent basis in August 1997. On January 1, 1999, Dr. Millard accepted the permanent position as Executive Associate Dean for the College of Pharmacy and as part of this position maintains oversight of the ORGS and reports all ORGS activities directly to the Dean of the College.

**Figure 1: Administrative Flow Chart for the ORGS**



The Executive Associate Dean is responsible for monitoring all graduate student applications, quality of graduate students and the progression of students through the graduate programs in the College. The Executive Associate Dean's role also includes monitoring of the quality of graduate programs and seeking ways to expand or improve graduate education within the COP. The Executive Associate Dean also acts as the major liaison between the Graduate School and the Office of Research, Technology and Graduate Education (ORTGE) at the University of Florida and the COP faculty and graduate students.

Information concerning graduate programs and education within the COP is communicated from the Executive Associate Dean to faculty or graduate students through the Departmental Chairs and Graduate Coordinators. The Graduate Studies Committee and COP Graduate Student Organization assist the Executive Associate Dean in the responsibility of governing graduate education in the COP (see: **Graduate Education and Program Activities, Graduate Studies Committee Activities, College of Pharmacy Graduate Student Organization**).

Related to research activities, the Executive Associate Dean has the major responsibility to see that faculty remain active in their individual research programs and to assist them in the grant or contract submission process. It is the Executive Associate Dean's responsibility to ensure that all grants are submitted and logged through UF in the proper manner. This includes making sure that proper contractual arrangements and documentation are completed and that each contract or grant contain the proper faculty percent effort and salary offset dollars, as well as correct Facilities & Administrative (F&A) cost and graduate student support. The Executive Associate Dean also sees that information relevant to research is communicated to the proper faculty or personnel within the COP.

Until FY 08/09 the Executive Associate Dean also acted as the College's principal liaison for the U.S.-Thai Consortium, then Dr. Earlene Lipowski, Professor in Pharmaceutical Outcomes and Policy, assumed the US-Thai consortium liaison position and sends an annual summary of activities to the ORGS that is included in this report. This initiative is a major international training agreement between all of the colleges of pharmacy in the country of Thailand and selected pharmacy schools in the United States (see: **U.S.-Thai Consortium Activities**).

The Executive Associate Dean is assisted in the ORGS by a Grants Specialist. Since June 2001, the ORGS Grants Specialist has been Ms. Deborah Bambarola. The Grants Specialist's role is to handle the daily operations of the ORGS. This includes the submission of needed reports to the COP, University and outside agencies. Communication of informational items to the faculty and graduate students related to issues of graduate education is also a responsibility of the Grants Specialist, as well as dealing individually with graduate students and assisting them with various problems and graduate course registration. A major responsibility of the Grants Specialist is to coordinate the various functions of the ORGS, as well as the tracking and filing of new and ongoing research grants.

The remainder of this report will deal with COP Graduate Programs, COP Research Activity, U.S.-Thai Consortium Activities, Coordinated Functions and Other Activities of the ORGS.

## Graduate Education and Program Activities

### Graduate Programs in the College of Pharmacy

The College of Pharmacy offers both Residential and online graduate programs. There is only one residential Ph.D. program administered through the College: *Ph.D. in Pharmaceutical Sciences*. Under the umbrella of the Ph.D. in Pharmaceutical Sciences (established in 1932) there are four *graduate specialty programs* that are recognized in the College of Pharmacy by the Graduate School. These graduate specialties are: Medicinal Chemistry (recognized in 1978), Pharmacodynamics (recognized in 1989), Pharmaceutical Outcomes and Policy (recognized in 1996), and Pharmaceutics (recognized in 1998).

Because of the growing need to have clinically-trained individuals who also have sufficient research training to conduct bench-to-bedside (translational) research, the Department of Pharmaceutics and the Department of Pharmacotherapy & Translational Research developed a collaborative Clinical Ph.D. track within the Pharmaceutics graduate program in the Fall of 2004. This Clinical Pharmaceutical Sciences Program is geared to prepare motivated individuals to pursue independent clinical research careers in academia, industry or government. During the May 2009 Advanced Degree commencement ceremonies, the Department of Pharmacotherapy & Translational Research graduated their first Ph.D. student, Dr. Maximilian Lobbmeyer, and their first M.S. student, Mr. Hrishikesh Navare, in the Clinical Pharmaceutical Sciences Program (see: [Graduate Student Graduation Activities](#)).

Tied to each of the residential Ph.D. programs in the College is an associated Master of Science (M.S.) in the Pharmacy Program. The M.S. in Pharmacy in the departments of Medicinal Chemistry, Pharmaceutics, and Pharmacodynamics requires each student to prepare and defend a thesis as part of their degree. Pharmaceutical Outcomes and Policy has the option of a thesis or non-thesis M.S. degree. In general, residential graduate students are discouraged from entering directly into an M.S. in Pharmacy; instead, students are strongly encouraged to enter into one of the Ph.D. programs. However, students may opt for the M.S. degree in their discipline if they find that the Ph.D. degree is not what they desire after entering the program.

The U.S. Food and Drug Administration/Center for Drug Evaluation and Research (FDA/CDER) in collaboration with the University of Florida offers a residential educational program aimed at attracting scientists and health professionals to the FDA/CDER. This [UF/FDA Graduate program](#) provides participants with two years of advanced graduate education at the masters (M.S.) or doctorate (Ph.D.) level designed to advance scientific training and analysis involved in the safety and regulatory decisions unique to the center's and agency's mission. The graduate program is divided into three specializations, including Pharmacoeconomics, Pharmacoeconomics and Patient Safety and Medication Use. This program currently has two cohorts with a total of 5 students. Upon enrollment, students receive a commission as officers in the United States Public Health Service and receive a salary and benefits associated with their rank throughout their educational program. Graduating students serve an assignment at the FDA/CDER for at least four years.

The College also offers a number of online offerings leading to the M.S. degree. The University of Florida online [Forensic Science Program](#) has grown to become the largest graduate forensic program in the world with several hundred enrollments each semester from some 30 different countries. Designed to meet the needs of working professionals, the program consists of four areas of concentration: Forensic Toxicology, Forensic Drug Chemistry, Forensic DNA & Serology and Forensic Science. Within each concentration the program offers a Master's Degree or a Certificate. The Toxicology concentration is provided by the College of Veterinary Medicine while the Drug Chemistry, DNA & Serology, and Forensic Science concentrations are provided by the College of Pharmacy. The program has received national recognition for excellence by the American Distance Education Consortium and recently the U.S. Distance Learning Association.

A sister program in Pharmaceutical Chemistry was introduced in 2009 primarily designed for Chemistry majors who wish to obtain graduate level courses in pharmaceutical sciences with a view to entering pharmaceutical industry. This program already has 50 students and growing rapidly. Two professional masters' degrees, one in Forensic Science and the other in Pharmaceutical Chemistry will also be available in January 2011.

In FY 05/06, the Department of Pharmaceutical Outcomes & Policy initiated an online Master's program that provides the necessary expertise and credentials to understand and apply issues relating to regulatory policies and law, and to serve as an authoritative source in the workplace on regulatory matters. Because the program is open to students from all academic and professional backgrounds (PharmD. not required), this unique Master's program serves as a career pathway for people both inside and outside the pharmacy industry to pursue careers with pharmaceutical companies, governmental agencies, professional associations, managed care and research organizations, benefits management companies, health systems and industry. The [Master of Science in Pharmacy](#), with concentration in Pharmaceutical Outcomes & Policy, offers several specialty tracks: Pharmacy Regulation & Policy, Applied Pharmacoeconomics, Clinical Research Regulation & Ethics, Patient Safety & Risk Management, Drug Regulatory Affairs and Institutional Pharmacy Leadership. Courses for this 30-credit program are held online in highly-interactive, live, virtual classrooms, and students are required to attend up to three weekend seminars and to take a final comprehensive exam on campus. Currently, the program has approximately 200 enrolled students and 90 alumni.

## Graduate Studies Committee (GSC) Activities

During FY 91/92 all Graduate Studies/Programs were *decentralized* in the College from the ORGS and into each of the individual departments. With this decentralization the review or setting of graduate policies and graduate student recruitment is now in the hands of the individual departments. To assist the ORGS in the management of graduate activities in the College, the Graduate Studies Committee (GSC) was established.

The primary goal for the GSC is to be a medium through which graduate and research programmatic goals are reviewed on a continual basis and aligned with the goals of the College and the University (*i.e.*, continuous quality improvement, CQI). The primary charge of the GSC is to review and make recommendations on graduate programs in the College of Pharmacy. This would include both new and existing graduate programs. The GSC is involved in considering how the College can attract/fund more graduate students with an emphasis on bringing in more U.S. students and professional (pharmacy) students. This committee is also involved in reviewing any future major mandate(s) from the Graduate School that may impact the functioning of the overall graduate program within the College (*i.e.*, stipends; tuition waivers). The committee continues to select finalists in the College's Spring Research Competition and also makes recommendations on how to improve this College function.

The makeup of the GSC includes a **graduate coordinator representative** from each of the departments and the **President of the COP Graduate Student Organization**. The Executive Associate Dean serves as the non-voting chair, and the Dean as *ex-officio* member of the committee. The Grants Specialist sits in on all committee meetings as the recording secretary. Representatives on the Committee were:

<b>Non-voting Chair:</b>	Dr. William Millard	Office of Research and Graduate Studies
<b>Voting Members:</b>	Dr. Raymond Bergeron	Medicinal Chemistry
	Dr. Michael Katovich	Pharmacodynamics
	Dr. Carole Kimberlin	Pharmaceutical Outcomes and Policy
	Dr. Tony Palmieri	Pharmaceutics
	Dr. Reginald Frye	Pharmacotherapy & Translational Research
	Dr. Ian Tebbett	Forensic Science Program
	Mr. Stephan Linden	President of COP Graduate Student Organization
<b>Ex-officio Member:</b>	Dr. William Riffée	Dean

The GSC met nine times throughout the year. Some of the issues that were deliberated included:

- Selection of the FY 10/11 Graduate School Fellowship Awardees
- Review of the use of Liberty Award monies for graduate students in each of the departments
- Use of State Line OPS monies for graduate student stipends
- Establishment of TA assignments for each of the semesters
- Establishment of goals and objectives for each graduate program within the College
- Selection of finalists for the 23<sup>rd</sup> Annual Research Showcase and Awards Recognition Day

## College of Pharmacy Graduate Student Organization

The COP Graduate Student Organization (GSO) is an avenue by which graduate students can discuss common issues related to graduate education and bring their concerns to the attention of the Executive Associate Dean for Research and Graduate Studies. The COP GSO elects a president on an annual basis. The president of the organization coordinates and runs the meetings (1-2 per year) and also sits in on the Graduate Studies Committee as a voice for the graduate students. **Mr. Stephan Linden**, from the department of Pharmaceutical Outcomes and Policy, served as president of the organization.

At the beginning of each Fall semester, the ORGS sponsors a luncheon for COP graduate students to promote a forum for exchange of information between each other and the ORGS.

## Graduate Faculty, Graduate Student, Post-doctoral Fellow, Visiting Scholar and Exchange Student Demographics

The College has 51 graduate faculty members who are closely involved in the training of all graduate students, post-doctoral fellows and visiting students and scholars. A complete listing of the college graduate faculty, by department, can be found in **Table 1**. A listing of all graduate students according to their department with their date of entrance into the graduate program, degree sought and mentor is found in **Table 2**. Ninety-three graduate students were engaged in residential studies

leading to either the M.S. or Ph.D. degree this year. The COP graduated fourteen Ph.D. students and two M.S. students (see: [Graduate Student Graduation Activities](#)). The COP accepted 19 new students into the various COP Graduate Programs, listed in [Tables 2 and 5](#). In addition, 470 graduate students were pursuing a M.S. degree program by online education. Noteworthy, is that 193 (41%) of these students graduated this past academic year.

[Table 3](#) outlines the overall demographics of the residential graduate student population within the COP. This year the number of male students compared to female students was a 48/52 percent male/female ratio. The college has a 38/62 percent American/Foreign student ratio as well. The percent of U.S. minority students was 8.6% (8 of 93) for FY 09/10. This is slightly higher than the previous two years (FY 08/09 and 07/08) at 7.4% (7 of 95) as shown in [Table 3](#), but still lower than that of FY 06/07 and FY 05/06 at 9% (8 of 94). Distribution of graduate students among the departments is illustrated in [Table 4](#). This year two departments tied for the highest number of graduate students, the Department of Pharmaceutics and the Department of Pharmaceutical Outcomes and Policy both with 26. Pharmacodynamics had 16 students, Medicinal Chemistry had 14, and Pharmacotherapy & Translational Research had 12 students pursuing graduate degrees. GPA and graduate program entrance test scores for both the entire population of COP graduate students and the entering class of 09/10 are shown in [Table 5](#).

For the sake of completeness, a listing by department of Post-doctoral Fellows and Visiting Scholars in the COP is illustrated in [Table 6](#). Noteworthy is that the COP Ph.D./M.S. graduate program had 4 students leave the graduate program in FY 09/10. This represents an attrition rate of 4.3% (4 of 93). One student from Medicinal Chemistry and three students from Pharmaceutical Outcomes and Policy all left the program for personal reasons.

**Table 1: Graduate Faculty**

Department/Center	Faculty Name	
<b>Medicinal Chemistry</b>	Raymond Bergeron	Kenneth Sloan
	Raymond Booth	Ian Tebbett
	Margaret James	Donna Wielbo
	Hendrik Luesch	
<b>Pharmaceutics/Center for Drug Discovery &amp; Center for Drug Interaction Research and Education</b>	Nicholas Bodor	Sven Normann
	Veronika Butterweck	Tony Palmieri
	Hartmut Derendorf	Sihong Song
	Guenther Hochhaus	Karen Whalen
	Cary Mobley	
<b>Pharmacodynamics</b>	Dorette Ellis	Bin Liu
	Jason Frazier	Michael Meldrum
	Carrie Haskell-Luevano	William Millard
	Michael Katovich	Joanna Peris
	Maureen Keller-Wood	William Riffée
<b>Pharmaceutical Outcomes and Policy/Center for Research in Pharmaceutical Care</b>	Diane Beck	Earlene Lipowski
	David Brushwood	Folakemi Odedina
	Chris Delaney	Richard Segal
	Abraham Hartzema	Burcin Unel
	Teresa Kauf	Almut Winterstein
	Carole Kimberlin	
<b>Pharmacotherapy &amp; Translational Research/Center for Pharmacogenomics</b>	Amber Beitelshes	Larry Lopez
	Rhonda Cooper-DeHoff	John Markowitz
	Paul Doering	Michael McKenzie
	Reginald Frye	Charles Peloquin
	Leslie Hendeles	J. Daniel Robinson
	Julie Johnson	Yan (Gong) Whisler
	Taimour Langae	Haojie Zhu

**Table 2: Graduate Students in Residential Programs**

Department/Center	Name	Date Entered	Expected Grad Date	Degree Sought	Mentor
<b>Medicinal Chemistry</b>	Ambadapadi, Sriram	Aug. 07	May. 12	Ph.D.	James
	Jiang, Yi **	Jan. 05	Dec. 09	M.S.	Bergeron
	Ketha, Hemamalini	Aug. 06	Aug. 10	Ph.D.	Sloan
	Kondabolu, Krishnakanth	Aug. 08	Dec. 12	Ph.D.	Booth
	Kwan, Jason	Aug. 05	Aug. 10	Ph.D.	Luesch
	Li, Wenjun	Aug. 06	May. 11	Ph.D.	James
	Merritt, Kristen	Aug. 02	Dec. 10	Ph.D.	James
	Montaser, Rana	Aug. 08	Dec. 12	Ph.D.	Luesch
	Salvador, Lilibeth	Aug. 08	Dec. 12	Ph.D.	Luesch
	Sun, Zhuming	Aug. 05	Aug. 10	Ph.D.	Booth
	Suriel, Sergio *	Aug. 09	Left Prog.	Ph.D.	James
	Synovec, Jennifer *	Aug. 09	May. 13	Ph.D.	Sloan
	Travers, Sean	Aug. 06	May. 11	Ph.D.	Booth
	Wang, Rui	Aug. 07	May. 11	Ph.D.	Luesch
	<b>Pharmaceutics/Center for Drug Discovery &amp; Center for Drug Interaction Research and Education</b>	Akbar, Mohammad *	Jan. 10	Dec. 14	Ph.D.
Chen, Mongjen *		Aug. 09	May. 13	Ph.D.	Song
Conrado, Daniela		Jan. 09	Dec. 13	Ph.D.	Derendorf
Fueth, Matthias		Aug. 07	May. 11	Ph.D.	Song
Goyal, Navinkumar **		Aug. 04	Aug. 09	Ph.D.	Hochhaus
Hassan, Am Mahbub		Aug. 05	May. 10	Ph.D.	Hochhaus
Haug, Karin		Jan. 09	Dec. 13	Ph.D.	Butterweck
Kandala, Bhargava *		Aug. 09	May. 13	Ph.D.	Hochhaus
Le, Huong		Aug. 07	May. 11	Ph.D.	Song
Li, Hong **		Aug. 04	Aug. 09	Ph.D.	Song
Li, Li		Jan. 09	Dec. 13	Ph.D.	Butterweck
Liu, Xuan *		Aug. 09	May. 13	Ph.D.	Butterweck
Mesaros, Ryan **		Aug. 07	May. 10	M.S.	Hughes
Naik, Runa		Aug. 07	May. 11	Ph.D.	Derendorf
Patel, Gina		Aug. 05	May. 10	Ph.D.	Hochhaus
Potocka, Elizabeth **		Aug. 04	Aug. 09	Ph.D.	Derendorf
Sahre, Martina		Jan. 07	Dec. 11	Ph.D.	Derendorf
Shi, Rong		Aug. 06	May. 11	Ph.D.	Derendorf
Song, Xuyang *		June. 09	May. 13	Ph.D.	King
Sun, Wan		Aug. 08	May. 12	Ph.D.	Derendorf
Tatipali, Manasa *		Jan. 10	May. 14	Ph.D.	Palmieri
Vieira, Manuela		Aug. 07	May. 11	Ph.D.	Derendorf
Wang, Zhaohua		Aug. 06	Dec. 10	Ph.D.	Derendorf/Palmieri
Waters, Chad	Jan. 09	May. 13	Ph.D.	Palmieri	
Weber, Benjamin	Jan. 09	Dec. 13	Ph.D.	Hochhaus	
Wu, Benjamin	Aug. 08	May. 12	Ph.D.	Derendorf	
<b>Clinical Pharmaceutical Science Track: Department of Pharmacotherapy &amp; Translational Research and Center for Pharmacogenomics</b>	Davis, Heather	Aug. 07	May. 11	Ph.D.	Johnson
	Duarte, Julio	Aug. 06	May. 10	Ph.D.	Johnson
	Egelund, Eric *	Aug. 09	May. 13	Ph.D.	Frye
	Gonzalez, Daniel	Aug. 08	May. 12	Ph.D.	Derendorf
	Karnes, Jason	Aug. 08	May. 12	Ph.D.	Cooper-DeHoff
Le, MyPhuong **	Aug. 05	May. 10	Ph.D.	Johnson	
Mohamed, Mohamed E.	Aug. 05	Aug. 10	Ph.D.	Frye	
Moore, Mariellen	Aug. 07	May. 11	Ph.D.	Johnson	



**Table 2: Graduate Students in Residential Programs (cont.)**

Department/Center	Name	Date Entered	Expected Grad Date	Degree Sought	Mentor
<b>Clinical Pharmaceutical Science Track (cont.)</b>	Price, Elvin **	Aug. 04	Dec. 09	Ph.D.	Johnson/Zineh
	Schentrup, Anne **	Aug. 04	Aug. 09	Ph.D.	Johnson
	Stanton, Melonie	Aug. 06	May. 10	Ph.D.	Frye
	Welder, Gregory *	June. 09	May. 13	Ph.D.	Johnson
<b>Pharmaceutical Outcomes and Policy/Center for Research in Pharmaceutical Care</b>	Al-Khars, Ibrahim	Aug. 06	Left Prog.	Ph.D.	Segal
	Ali, Ayad	Aug. 05	May. 10	Ph.D.	Hartzema
	Allen, Mark **	Aug. 05	May. 10	Ph.D.	Kimberlin
	Chanliongco, Andrew *	Aug. 09	May. 13	Ph.D.	Segal
	Chen, Chih-Ying	Aug. 04	Aug. 10	Ph.D.	Winterstein
	Douglas, Charles	Aug. 05	Dec. 10	Ph.D.	Ried
	Folmar, David *	Aug. 09	May. 13	Ph.D.	Kimberlin
	Ghandi, Pranav	Aug. 06	May. 11	Ph.D.	Ried
	Goodman, Jessica	Aug. 08	Left Prog.	Ph.D.	Kauf
	Guo, Jennifer	Aug. 08	May. 12	Ph.D.	Hartzema
	Hampp, Christian **	Aug. 04	Aug. 09	Ph.D.	Winterstein
	He, Jinghua	Aug. 05	Dec. 10	Ph.D.	Hartzema
	Hsu, Chien-Ning **	Aug. 04	May. 10	Ph.D.	Kauf
	Knox, Caitlin *	Aug. 09	May. 13	Ph.D.	Winterstein
	Lee, Christine	Aug. 07	May. 11	Ph.D.	Segal
	Linden, Stephan	Aug. 07	May. 11	Ph.D.	Winterstein
	Ma, Qinli	Aug. 07	May. 11	Ph.D.	Kauf
	Odia, Efe	Aug. 08	May. 12	Ph.D.	Winterstein
	Okoro, Olihe *	Aug. 09	May. 13	Ph.D.	Lipowski
	Ritho, Jane	Aug. 05	Dec. 10	Ph.D.	Hartzema
Rosenthal, Rachel *	Aug. 09	May. 13	Ph.D.	Kimberlin	
Schelfhout, Jonathan *	Aug. 09	May. 13	Ph.D.	Kimberlin	
Telfair, Tamara	Aug. 02	May. 10	Ph.D.	Hartzema	
Wen, Xueron (Sharon)	Aug. 08	May. 12	Ph.D.	Hartzema	
Wu, Bingcao (Glen)	Aug. 08	May. 12	Ph.D.	Kauf	
Zeigler, Lisa *	June. 09	Left Prog.	Ph.D.	Kimberlin	
<b>Pharmacodynamics</b>	Bhatia, Chinki **	Aug. 04	Aug. 09	Ph.D.	Frazier
	Bruce, Erin	Aug. 08	May. 12	Ph.D.	Katovich
	Dismuke, Michael **	Aug. 06	Dec. 09	Ph.D.	Ellis
	Dutta, Garima	Aug. 06	May. 11	Ph.D.	Liu
	Feng, Xiaodi	Aug. 07	May. 11	Ph.D.	Keller-Wood
	Haslach, Erica	Aug. 06	May. 11	Ph.D.	Haskell-Luevano
	Kasper, James	Aug. 06	May. 11	Ph.D.	Peris
	Lingis, Melissa **	Aug. 04	Dec. 09	Ph.D.	Keller-Wood
	Liu, Yue	Aug. 07	May. 11	Ph.D.	Liu
	Qi, Yanfei **	Aug. 05	Dec. 09	Ph.D.	Katovich
	Rathinasabapathy, A. *	June. 09	May. 13	Ph.D.	Katovich
	Schaub, Jay	Aug. 07	May. 11	Ph.D.	Haskell-Luevano
	Sharma, Heera	Aug. 06	May. 11	Ph.D.	Liu
	Shenoy, Vinayak **	Aug. 05	Dec. 09	Ph.D.	Katovich
	Wang, Yunyang *	June. 09	May. 13	Ph.D.	Haskell-Luevano

\* new students entering a graduate program during FY 09/10

\*\* students who graduated with an M.S. or Ph.D. during FY 09/10

**Table 3: Graduate Student Demographics in Residential Programs**

Gender	Citizenship						American Minority					
	United States		Foreign		Black		Hispanic		Asian			
	#	%	#	%	#	%		%		%		%
<b>TOTAL</b>	93		35	37.6%	58	62.4%	2	2.2%	3	3.2%	3	3.2%
<b>Male</b>	45	48.4%	19	42.2%	26	57.8%	1	2.2%	3	6.7%	1	2.2%
<b>Female</b>	48	51.6%	16	33.3%	32	66.7%	1	2.1%	0	0.0%	2	4.2%

**Table 4: Residential Graduate Students, Fellows, Visiting Scholars and Exchange Students**

Department/Center	Graduate Students	Post-doctoral Fellows	Visiting Scholars	Exchange Students
<b>Medicinal Chemistry</b>	14	12	1	2
<b>Pharmaceutics</b>	26	7	0	71
<b>Pharmacodynamics</b>	15	4	0	0
<b>Pharmaceutical Outcomes and Policy</b>	26	1	0	0
<b>Pharmacotherapy &amp; Translational Research</b>	12	13	0	0
<b>COLLEGE TOTAL</b>	<b>93</b>	<b>37</b>	<b>1</b>	<b>73</b>

**Table 5: GPA and Test Scores of Graduate Students in Residential Programs**

Class	GPA	GRE			TOEFL	TSE
		Verbal	Quant.	Total		
<b>COLLEGE TOTAL (93)*</b>	3.57	512	701	1214	104	57
<b>FY 09/10 Class (19)</b>	3.66	509	711	1220	99	N/A

\* numbers in parenthesis denote student population

**Table 6: Post-doctoral Fellows and Visiting Scholars**

Department/Center	Name	Mentor	Home Country
<b>Medicinal Chemistry</b>	Bharti, Neelam	Bergeron	India
	Canal, Clinton	Booth	USA
	Chen, Qi Yin	Luesch	China
	Gu, Yuan	James	China
	Kim, Myong Sang	Booth	Korea
	Matthew, Susan	Luesch	India
	McManis, James	Bergeron	USA
	Ratnayake, Ranjala	Luesch	Sri Lanka
	Singh, Shailendra	Bergeron	India
	Sintjago, Tania	Booth	USA
	Villa, Nancy	Booth	Columbia
	Vincek, Adam	Booth	USA
	<b>Pharmaceutics/Center for Drug Discovery &amp; Center for Drug Interaction Research and Education</b>	Bewernitz, Michael	Derendorf
Liu, Yi		Butterweck	China
Lu, Yuanqing		Song	China
Niu, Guoqin		Hughes	China
Sabarinath, S.		Derendorf	India
Sampath, Chetham		Butterweck	India
<b>Pharmacodynamics</b>	Singh, Rajendra	Derendorf	India
	Li, Zhimin	Peris	China
	Singh, Anamika	Haskell-Luevano	India
<b>Pharmacotherapy &amp; Translational Research/ Center for Pharmacogenomics</b>	Yao, Hua	Haskell-Luevano	China
	Anderson, Shawn	Gums	USA
	Barboza, José	Taylor	USA
	Elewa, Hazem	Johnson	Egypt
	Fisher, Shila	Angaran	USA
Laszczyk, Jeffrey	Angaran	USA	

<b>Table 6: Post-doctoral Fellows and Visiting Scholars (cont.)</b>			
<b>Department/Center</b>	<b>Name</b>	<b>Mentor</b>	<b>Home Country</b>
<b>Pharmacotherapy &amp; Translational Research/ Center for Pharmacogenomics (cont.)</b>	Leverone, Donna	Epstein	USA
	McDonough, Caitrin	Johnson	USA
	Pullo, Joshua	Angaran	USA
	Reena, Misty	Angaran	USA
	Smith, Steven	Gums	USA
	Vandell, Alexander	Johnson	USA
	Willis, Crystal	Taylor	USA
	Zhang, Bin	Cooper-DeHoff	Japan
	Anderson, Shawn	Gums	USA

## PharmD/Ph.D. Students in Graduate Programs

The University of Florida, College of Pharmacy offers a [joint Doctor of Pharmacy \(PharmD\) and Doctor of Philosophy \(Ph.D.\) degree](#) program for qualified Doctor of Pharmacy students who are interested in accelerated graduate studies. The purpose of this program is to prepare clinically oriented pharmaceutical scientists. Through the selection of appropriate graduate level courses and attainment of research skills and experience through research clerkships, students in the Doctor of Pharmacy program can receive advanced standing in one of the graduate pharmaceutical science disciplines in the College of Pharmacy. The joint degree program enables students to attain both degrees within a time frame of approximately nine years of study from the beginning of college. This includes at least two years of prepharmacy studies, four years of professional education, and approximately three to four years of graduate studies.

Due to the increasing interest from our PharmD students in the Clinical Pharmaceutical Sciences Program in our Department of Pharmacotherapy & Translational Research and Department of Pharmaceutics (see page 2), we have experienced a resurgence of the PharmD/Ph.D. program in recent years. Our first student to complete the PharmD/Ph.D. track was in May 2005 in our POP Department. Currently we have a total of 12 PharmD/Ph.D. students completing the joint degree program. Eleven students have completed their PharmD curriculum and now have entered the Ph.D. program and one student is currently finishing her PharmD degree and will enter the Ph.D. portion of the joint program in the next year or two. A complete listing of PharmD/Ph.D. students is listed in **Table 7**.

<b>Table 7: PharmD/Ph.D. Students Engaged in COP Graduate Residential Programs</b>			
<b>Student Name</b>	<b>Department/Program</b>	<b>Expected Graduation Year</b>	
		<b>PharmD</b>	<b>Ph.D.</b>
<b>Completing the Ph.D.:</b>			
<b>Dr. Anne Schentrup</b>	Pharmaceutics/PTR*/CST**	2004	2009
<b>Dr. Elvin Price</b>	Pharmaceutics/PTR*/CST**	2004	2009
<b>Dr. Julio Duarte</b>	Pharmaceutics/PTR*/CST**	2006	2010
<b>Dr. Melanie Stanton</b>	Pharmaceutics/PTR*/CST**	2006	2010
<b>Dr. Heather Davis</b>	Pharmaceutics/PTR*/CST**	2007	2011
<b>Dr. Mariellen Moore</b>	Pharmaceutics/PTR*/CST**	2007	2011
<b>Dr. Jason Karnes</b>	Pharmaceutics/PTR*/CST**	2008	2012
<b>Dr. Daniel Gonzalez</b>	Pharmaceutics/PTR*/CST**	2008	2012
<b>Dr. Eric Egelund</b>	Pharmaceutics/PTR*/CST**	2009	2013
<b>Dr. Greg Welder</b>	Pharmaceutics/PTR*/CST**	2009	2013
<b>Dr. Andrew Chanliongco</b>	Pharmaceutical Outcomes and Policy	2009	2013
<b>Completing the PharmD Degree:</b>			
<b>Ms. Nancy Gillis</b>	Pharmaceutics/PTR*/CST**	2012 (3PD)	2016

\* PTR - Pharmacotherapy & Translational Research

\*\* CST - Clinical Science Tract

## FDA/CDER Students in the Master's Program

This year was the inaugural year of our ongoing graduate training program with FDA/CDER. The inaugural class had five enrollees who have been individually identified in Table 8 below. Subsequent years will have at a minimum 10 enrollees each academic year, and which, when fully matured, will provide training to 20 MS and/or PhD commissioned officers in the PHS.

<b>Table 8: FDA/CDER Students in Masters Residential Programs</b>		
<b>Student Name</b>	<b>Previous Institution</b>	<b>Year Entered Program</b>
<b>Dr. Matthew Kirchoff</b>	<b>University of Florida</b>	2009
<b>Dr. Jonas Santiago</b>	<b>Howard University</b>	2009
<b>Dr. Danielle Smith</b>	<b>Florida Agricultural &amp; Mechanical University</b>	2009
<b>Mr. James Trinidad</b>	<b>University of Florida</b>	2009
<b>Dr. Evan Wearne</b>	<b>University of Nebraska Medical Center</b>	2009

## Graduate Student Recruitment Activities

Recruitment of graduate students was decentralized in 1991 and placed in the hands of the individual departments. As such, departments are now responsible for their own recruitment brochures and strategies for graduate student recruitment.

Whenever possible, requests for application materials that come through the ORGS are now sent to the departments. However, when applicants do not specify a graduate specialty in their letter of inquiry the ORGS handles these requests. To streamline the process, a letter (see **Appendix A**) describing the individual graduate programs/specialties and identifying the graduate coordinators of each graduate specialty is sent to each applicant. In this letter, applicants are encouraged to access information from the COP home page on the Web.

Graduate student application activity for FY 09/10 for each of the departments is illustrated in **Table 9**. The College received 181 completed applications. Of the 181 completed applications received by the departments, only 19 (or 10.5%) of the applicants were accepted, of which 14 students (or 73.7% of the potential students) will enter our graduate programs for FY 10/11.

<b>Table 9: Departmental Graduate Student Recruitment Activity</b>					
<b>Department</b>	<b># Completed Applications</b>	<b># Applications Accepted</b>	<b>% Accepted</b>	<b># Applicants Entered</b>	<b>% Entered</b>
<b>Medicinal Chemistry</b>	34	4	11.8%	3	75.0%
<b>Pharmaceutics</b>	64	4	6.3%	4	100.0%
<b>Pharmacodynamics</b>	34	3	8.8%	2	66.7%
<b>Pharmaceutical Outcomes and Policy</b>	44	7	15.9%	4	57.1%
<b>Pharmacotherapy &amp; Trans. Research</b>	5	1	20.0%	1	100.0%
<b>COLLEGE TOTAL</b>	181	19	10.5%	14	73.7%

## Exchange Students in the College of Pharmacy

Each year many exchange students visit the COP for a 3-4 month period to help them develop in their research as part of the core curriculum from their home country. **Table 10** lists the 53 students hosted by the COP during this academic year.

<b>Table 10: Exchange Students</b>			
<b>Department</b>	<b>Student Name</b>	<b>Mentor</b>	<b>Home Country</b>
<b>Medicinal Chemistry</b>	Gabel, Svetlana	James	Germany
	Schlegel, Grudrun	Luesch	Germany

**Table 10: Exchange Students (cont.)**

<b>Department</b>	<b>Student Name</b>	<b>Mentor</b>	<b>Home Country</b>
<b>Pharmaceutics/ Center for Drug Discovery &amp; Center for Drug Interaction Research and Education</b>	Algermissen, Julie	Derendorf	Germany
	Alter, Monika	Derendorf	Germany
	Andueza-Galeno, Isabel	Derendorf	Venezuela
	Bauer, Dominik	Derendorf	Germany
	Benkert, Theresa	Derendorf	Germany
	Boubaris, Katharina	Derendorf	Germany
	Butz, Lena	Derendorf	Germany
	Chooluck, Kotchaplan	Derendorf	Thailand
	Christophersen, Peter	Derendorf	Germany
	Erkelens, Lonneke	Song	The Netherlands
	Falcao, Nivea	Derendorf	Brazil
	Fick, Eva	Derendorf	Germany
	Gayrard, Mathieu	Derendorf	Germany
	Gieser, Silvia	Derendorf	Germany
	Grunert, Sabrina	Butterweck	Germany
	Haas, Manuel	Derendorf	Germany
	Habteab, Helen	Derendorf	Germany
	Heckel, Rita	Butterweck	Germany
	Heisler, Emanuel	Derendorf	Germany
	Ikawa, Kazuro	Derendorf	Japan
	Kaune, Almuth	Derendorf	Germany
	Legler, Cornelia	Derendorf	Germany
	Legler, Julia	Derendorf	Germany
	Manzer, Caroline	Derendorf	Germany
	Meletta, Romana	Butterweck	Switzerland
	Michler, Victoria	Derendorf	Germany
	Nguyen, Thi MyHanh	Derendorf	Germany
	Nippel, Gesa	Derendorf	Germany
	Panzavolta, Giscardo	Derendorf	Italy
	Ponjee, Godelieve	Derendorf	The Netherlands
	Rohrschneider, Marc	Derendorf	Germany
	Schaeuble, Tanja	Butterweck	Germany
	Schauer, Kristina	Derendorf	Germany
	Schlegel, Gudrun	Derendorf	Germany
	Schlender, Jan Frederik	Derendorf	Germany
	Schneider, Nancy	Derendorf	Germany
	Schorer, Michaela	Derendorf	Germany
	Siegle, Nora	Derendorf	Germany
	Sobhi, Afshin	Derendorf	Germany
	Stademann, Kati	Derendorf	Germany
	Stritt, Julia	Derendorf	Germany
	Thanei, Sophie	Butterweck	Switzerland
	Turan, Gabriella	Derendorf	Germany
	Vissienon, Cica	Butterweck	Germany
	Völkner, Alexander	Derendorf	Germany
	Wallenfang, Daniela	Derendorf/Peris	Germany
	Wicha, Sebastian	Derendorf	Germany
	Wolff, Sebastian	Derendorf/Winterstein	Germany
	Ye, Yizhou	Derendorf	China
	Zhang, Jie	Derendorf	China
	Zhang, Xiaoyun	Derendorf	China

## Graduate Student Graduation Activities

During this academic year the COP had fourteen students finish their graduate program and earn a Ph.D. degree and two who earned a Master's degree. The following are the graduates according to commencement date.

### Ph.D. in Pharmaceutical Science Degrees Conferred

#### AUGUST 2009 (SUMMER COMMENCEMENT)

**Name:** **Dr. Chinki Bhatia**  
**Dissertation Title:** *Presynaptic Regulation of Afferent Projections to Hilar Mossy Cells*  
**Faculty Mentor:** Dr. Charles J. Frazier, Assistant Professor  
**Department:** Pharmacodynamics  
**Previous Degree:** B.S. in Pharmacy, Birla Institute of Technology, India

Dr. Bhatia assumed a position as a Post-doctoral Fellow in the Department of Neuroscience, Albert Einstein College of Medicine, Yeshiva University, New York, NY.

**Name:** **Dr. Navinkumar S. Goyal**  
**Dissertation Title:** *Bioequivalence of Inhaled Corticosteroids – A Pharmacokinetic*  
**Faculty Mentor:** Dr. Guenther Hochhaus, Professor  
**Department:** Pharmaceutics  
**Previous Degree:** B.S. in Pharmacy, Mah Institute of Pharmacy, India

Dr. Goyal assumed a position as a Scientist with GlaxoSmithKline, King of Prussia, PA.

**Name:** **Dr. Christian Hampp**  
**Dissertation Title:** *Utility of Current Surveillance Systems to Detect Respiratory Syncytial Virus Seasons and Implications for Immunophylaxis*  
**Faculty Mentor:** Dr. Almut G. Winterstein, Assistant Professor  
**Department:** Pharmaceutical Outcomes and Policy  
**Previous Degree:** B.S. in Pharmacy, Saarland University, Germany

Dr. Hampp assumed a position as a Post-doctoral Fellow in the Department of Pharmaceutical Outcomes and Policy, College of Pharmacy, University of Florida.

**Name:** **Dr. Hong Li**  
**Dissertation Title:** *Adult Stem Cell-based Gene Therapy for Alpha 1-Antitrypsin*  
**Faculty Mentor:** Dr. Sihong Song, Associate Professor  
**Department:** Pharmaceutics  
**Previous Degree:** M.S. in Microbiology and Biochemical Pharmacy, China Pharmaceutical University; M.S. in Statistics, University of Florida

Dr. Li assumed a position as a Post-doctoral Fellow in the Department of Pharmaceutical Science, School of Pharmacy, University of Buffalo, SUNY.

**Name:** **Dr. Elizabeth Potocka**  
**Dissertation Title:** *Pharmacokinetics and Pharmacodynamics of Insulin following Different Routes of Administration in Healthy and Diabetic Subjects*  
**Faculty Mentor:** Dr. Hartmut Derendorf, Professor  
**Department:** Pharmaceutics  
**Previous Degree:** B.S. in Mathematics, Fairfield University

Dr. Potocka assumed a position as a Pharmacokineticist at MannKind Corporation, Danbury, CT.

**Name:** **Dr. Anzeela M. Schentrup**  
**Dissertation Title:** *Role of the Arachidonate 5-Lipoxygenase Enzymatic Pathway in Coronary Heart Disease*  
**Faculty Mentor:** Dr. Julie A. Johnson, Professor  
**Department:** Pharmacotherapy & Translational Research  
**Previous Degree:** B.A. in History of Science, PharmD in Clinical Pharmacy, M.S. in Medicinal Chemistry, University of Florida

Dr. Schentrup assumed a position as a Post-doctoral Fellow in the Department of Pharmacotherapy & Translational Research, College of Pharmacy, University of Florida.

#### **DECEMBER 2009 (FALL COMMENCEMENT)**

**Name:** **Dr. William M. Dismuke**  
**Dissertation Title:** *Targeting the Nitric Oxide Signal Transduction Pathway as a Potential Ocular Hypotensive*  
**Faculty Mentor:** Dr. Dorette Z. Ellis, Assistant Professor  
**Department:** Pharmacodynamics  
**Previous Degrees:** B.S. in Botany, University of Florida

Dr. Dismuke assumed a position as a Post-doctoral Fellow in the Department of Ophthalmology, College of Medicine, University of Arizona.

**Name:** **Dr. Melissa D. Lingis**  
**Dissertation Title:** *Regulation of the Maternal Hypothalamic-Pituitary-Adrenal Axis during Pregnancy in the Ewe: Relative Roles of the Mineralocorticoid Receptor and the Serotonergic System*  
**Faculty Mentor:** Dr. Maureen Keller-Wood, Professor  
**Department:** Pharmacodynamics  
**Previous Degrees:** B.S. in Animal Sciences – Biology; M.Agr in Animal Science – Reproductive Biology, University of Florida

Dr. Lingis assumed a position as a Post-doctoral Fellow in the Department of Physiology and Functional Genomics, College of Medicine, University of Florida.

**Name:** **Dr. Elvin Price**  
**Dissertation Title:** *Liver X Receptor-Alpha (LXRA) Gene Polymorphisms in Cardiovascular Disease and Fenofibrate Response*  
**Faculty Mentor:** Dr. Julie A. Johnson, Professor and Dr. Issam Zineh, Professor  
**Department:** Pharmacotherapy & Translational Research  
**Previous Degrees:** PharmD in Pharmacy, Florida A&M University

Dr. Price assumed a position as an Assistant Professor in the Department of Pharmaceutical Sciences, College of Pharmacy, University of Arkansas for Medical Sciences.

**Name:** **Dr. Yanfei Qi**  
**Dissertation Title:** *Overexpression of ANG-(1-7) or Cardiac-selective Overexpression of Angiotensin Type 2 Receptor Improves Cardiac Function and Attenuates Left Ventricular Remodeling*  
**Faculty Mentor:** Dr. Michael J. Katovich, Professor  
**Department:** Pharmacodynamics  
**Previous Degrees:** B.S. in Medicine and M.S. in Molecular Biology, Guiyang Medical School, China

Dr. Qi assumed a position as a Post-doctoral Fellow in the Department of Physiology and Functional Genomics, College of Medicine, University of Florida.

**Name:** **Dr. Vinayak Shenoy Katapakikar**  
**Dissertation Title:** *Cardio-pulmonary Protective Role of the ACE2-ANG-(1-7)-MAS Axis in Lung and Heart Disease*  
**Faculty Mentor:** Dr. Michael J. Katovich, Professor  
**Department:** Pharmacodynamics  
**Previous Degrees:** B.S. in Pharmacy, College of Pharmaceutical Sciences, India; M.S. in Pharmacology, Birla Institute of Technology, India

Dr. Shenoy assumed a position as a Post-doctoral Fellow in the Department of Pharmacodynamics, College of Pharmacy, University of Florida.

#### **MAY 2010 (SPRING COMMENCEMENT)**

**Name:** **Dr. Mark Allen**  
**Dissertation Title:** *Understanding Situations Where People Report Cost-related Medication Nonadherence: A Qualitative Study*  
**Faculty Mentor:** Dr. Carole Kimberlin, Professor  
**Department:** Pharmaceutical Outcomes and Policy  
**Previous Degrees:** B.A. in Math, University of California at Berkeley; M.A. in Sociology, University of Florida

Dr. Allen assumed a position as an Affiliate Clinical Assistant Professor in the Department of Pharmaceutical Outcomes and Policy, College of Pharmacy, University of Florida.

**Name:** **Dr. Chien-Ning Hsu**  
**Dissertation Title:** *Clinical Effectiveness and Cost of Antiviral Therapy in Patients with Hepatitis C Infection in a Managed Care Setting*  
**Faculty Mentor:** Dr. Teresa Kauf, Associate Professor  
**Department:** Pharmaceutical Outcomes and Policy  
**Previous Degrees:** B.S. in Pharmacy, China Medical University, Taiwan; M.S. in Clinical Pharmacy, National Taiwan University, Taiwan

Dr. Hsu assumed a position as an Outcome Researcher at the Chang Gung Memorial Hospital at Kaohsiung, Taiwan.

**Name:** **Dr. MyPhuong Le**  
**Dissertation Title:** *Factors Impacting Fructose Bioavailability and Its Adverse Metabolic Effects*  
**Faculty Mentor:** Dr. Julie A. Johnson, Professor  
**Department:** Pharmacotherapy & Translational Research  
**Previous Degrees:** B.A. in Biology and History, Whitman College

Dr. Le assumed a position as a Post-doctoral Fellow in the Division of Nephrology, Department of Medicine, University of Colorado, Denver, CO.

### **Master's in Pharmaceutical Science Degrees Conferred**

#### **DECEMBER 2009 (FALL COMMENCEMENT)**

**Name:** **Mr. Yi Jiang**  
**Thesis Title:** *Non-thesis Masters*  
**Faculty Mentor:** Dr. Raymond Bergeron, Professor  
**Department:** Medicinal Chemistry  
**Previous Degree:** B.S. in Applied Chemistry, Nanjing University; M.S. in Medicinal Chemistry, Peking Union Medical College, China

Mr. Jiang's position is unknown.

#### **MAY 2010 (SPRING COMMENCEMENT)**

**Name:** **Mr. Ryan A. Mesaros**  
**Thesis Title:** *The Effect of Lysophosphatidylcholine Incorporation on Liposomal Membrane Fusion and Rupture*  
**Faculty Mentor:** Dr. Jeffrey Hughes, Professor  
**Department:** Pharmaceutics  
**Previous Degree:** B.S. in Biological Sciences, University of Pittsburgh

Mr. Mesaros joined the PharmD program at Lake Erie College of Osteopathic Medicine and School of Pharmacy, Bradenton, FL.



## Forensic Sciences Master's Degrees Conferred

This year in the Forensics programs there were 328 students enrolled in one of the four Master's programs and 90 students enrolled in one of the six certificate programs. Within the Master's programs there was a total of 80 students who graduated; 11 (13.8%) from the Drug Chemistry program, 25 (31.3%) from the DNA and Serology program, 43 (53.8%) from the Forensic Science program, and 1 (.01%) from the Pharmaceutical Chemistry program. Within the certificate programs there was a total of 77 students who received their certificate; 16 (20.8%) from the Drug Chemistry program, 42 (54.5%) from the DNA and Serology program, 16 (20.8%) from the Death Investigation program, and 3 (3.9%) from the Environmental Forensics program. Listed in **Table 11** are those students who have graduated with their Master's in the COP programs.

<b>Table 11: Master's Graduates in the Forensic Sciences Program</b>		
<b>Program</b>	<b>Name</b>	
<b>Summer 2009</b>		
<b>DNA and Serology</b>	Albrecht, Lynette	Grygo, Sarah
	Atterbury, Sarah	Murray, Lola
	Bodenweiser, Crystal	Simmons, Brian
	Cuddeback, Sarah	Stout, Lynn
	Esquilin, Maria C.	Wonderly, Megal
<b>Drug Chemistry</b>	Colebrook, Melody N.	Ladwig, Glenn
	Hardin, Katherine	Ritchey, Donald
	Krauthauser, Candice L.	Wilson, Jeffrey A.
<b>Forensic Science</b>	Andrus, Abby E.	Ghannam, Yvette
	Beacon, Mairi	Gordon, Vanessa
	Binns, Schnell	O'Shea, Robert
	Bocci, Kerrie	Pasternak, Joseph
	Brown, Ranada	Spencer, Denise
	Escobar Elennis, Jennifer	
<b>Fall 2009</b>		
<b>DNA and Serology</b>	English, Laura	Sans-Blumel, Julie A.
	Hayes, Rachel	Satchell, Samantha
	Klann, Jody K.	Simpkins Hayes, Ashley
	Lodhi, Shanin	Toldy, Sharon
	McConnell, Stefanie	Vavra, Cheri
	Muehling, Jill	Wheeler, Jessica
<b>Drug Chemistry</b>	Dicks, Dana	Hart, Gerald
	Fernandez, Natalie	Schulz, Brian
<b>Forensic Science</b>	Baker Baugh, Cassandra	DeWitt, Theresa
	Berg, Matthew	Duick, Tamara
	Brown, Henry (Scott)	Farah, Kimberly
	Buchanan, Ryan	Herkalo El-Semarani, Mary
	Cillessen, Sabrina	Mentzer, Heather
	Clarke, Christine	Patel, Tanay
	Culver, Lauren	Raines, Melinda E.
	D'Andrea, Nicholas	Winton, James (Troy)
<b>Spring 2010</b>		
<b>DNA and Serology</b>	Maier, Stephanie	Webster, Jessica
	Moody-Kosman, Peggy	
<b>Drug Chemistry</b>	Lucas, Kristen	
<b>Forensic Science</b>	Allen Auclair, Brittany	Melo, Michelle
	Bailey, Kaitlin	Michaud, Kasia
	Barrentine, Mary	Moore, Camille
	Carrillo, James D.	Reynolds, Erin
	Drvol, Charles	Nguyen, Mai
	Johnson, Linda	Raffo Magnasco, Estefania
	Lukjan, Stephania	White, Theresa
	McGeorge, Amber	Wiggins-Mitchell, Elizabeth
<b>Pharmaceutical Chemistry</b>	McRae, Steven A.	

## Pharmacy Regulations and Policy Master's Degrees Conferred

This year in the *Pharmacy Regulation and Policy Program* there were 142 students enrolled in one of the seven track programs offered; Pharmacy Regulations and Policy, Applied Pharmacoeconomics, Clinical Research Regulation & Ethics, Patient Safety & Risk Management, Forensic Pharmacy, Drug Regulatory Affairs, and Institutional Pharmacy Leadership. Within the Master's programs there was a total of 44 students who graduated; 23 (52.3%) from the Pharmacy Regulation and Policy tract; 15 (34.1%) from the Applied Pharmacoeconomics tract; 1 (2.3%) from the Clinical Research Regulations and Ethics tract; 2 (4.5%) from the Drug Regulatory Affairs tract; 2 (4.5%) from the Forensic Pharmacy tract; and 1 (2.3%) from the Patient Safety and Risk Management tract. Listed in **Table 12** are those students who have graduated with their Master's in the COP programs.

<b>Table 12: Master's Graduates in the Pharmacy Regulations and Policy Program</b>		
<b>Program</b>	<b>Name</b>	
<b>Summer 2009</b>		
<b>Pharmacy Regulations and Policy</b>	Dominy, Stephanie	Geiger, Jason
<b>Fall 2009</b>		
<b>Pharmacy Regulations and Policy</b>	Alderman, Darrell	Mesaros, Jeffrey
	Holden, Daniel	Moss, Staci
	Long, Angela	Roussell, Tayiana
<b>Spring 2010</b>		
<b>Applied Pharmacoeconomics</b>	Amick, Bryan	Renaud-Mutart, Amy C.
	Bottie, Adam Q.	Rivera, Blanca R.
	Comesanas, Cristina R.	Sirmons, Cedric
	Dubois, Renard	Sizemore, Brian T.
	Kane, Erica B.	Speegle, Camillia
	King, Sheryl	Twedt, Elaine L.
	Mayer, Bryan	Vaughn, Greg
	Newton, Harold	
<b>Clinical Research Regulations and Ethics</b>	Leon, Monica	
<b>Drug Regulatory Affairs</b>	Seale, W. Kirk	Sindaco, Mario
<b>Forensic Pharmacy</b>	Bergeron, Rachelle L.	Lackey, Michael J.
<b>Patient Safety and Risk Management</b>	Vo, Alba M.	
<b>Pharmacy Regulations and Policy</b>	Brandon, Erika M.	Hoyles, Jennifer
	Capehart, Krista	Nastase, Ellen
	Castaldo, Deane	Poole, Shalanda
	DeRevere, Aileen	Reeves, Shauna
	Ghoshal, Malilni	Robbins, Tracy
	Goldstein, Stephen B.	Russell, Corryn
	Hernandez, Tracey	Ward, Melea A.
	Hofer, Melissa A.	

## Graduate Student Funding and Awards

Awardees are recommended to the Graduate Studies Committee or the Executive Associate Dean for Research and Graduate Studies by their respective graduate coordinator or departmental chair. Based on the student's academic credentials and letters of support, awardees are selected by the Executive Associate Dean for Research and Graduate Studies in discussion with the Graduate Studies Committee.

The COP carried the major load of the funding of graduate student stipends by supporting forty-three graduate student stipends; three students received support from their department; fourteen students received support from extramural research grants; eleven students funded their own graduate education this year. Twelve students received Grinter Awards as a supplement to their state funding. Graduate stipends ranged from \$14,000 to \$30,000 with an average overall stipend of \$17,871.

Fourteen graduate student fellowship proposals totaling \$270,820 were submitted to extramural sources this year. Agencies to which proposals were submitted were the American Foundation for Pharmaceutical Education (AFPE), the

American Heart Association (AHA) – Florida Affiliate, the Cystic Fibrosis Foundation, and the Fogarty International Clinic Research Scholars & Fellows.

## Graduate School Scholarships

Beginning Fall Semester 1999, the University of Florida offered the *Graduate School Scholarship* program with the express interest of increasing graduate enrollment and attracting high quality students to each graduate program at the University. This scholarship represents the highest graduate student award available at the University and is funded at nationally competitive levels at \$25,000/year for four years plus all tuition remuneration, and full health insurance coverage. The College of Pharmacy received five additional *Graduate School Scholarships*. The recipients of the *Graduate School Scholarships* are:

<b>Ms. Jennifer Synovec</b>	Medicinal Chemistry	FY 09/10
<b>Mr. Bhargava Kandala</b>	Pharmaceutics	FY 09/10
<b>Mr. Yunyang Wang</b>	Pharmacodynamics	FY 09/10
<b>Dr. Lisa Zeigler</b>	Pharmaceutical Outcomes and Policy	FY 09/10
<b>Dr. Greg Welder</b>	Pharmacotherapy & Translational Research	FY 09/10
<b>Dr. Daniel Gonzalez</b>	Pharmacotherapy & Translational Research	FY 08/09
<b>Dr. Jason Karnes</b>	Pharmacotherapy & Translational Research	FY 08/09
<b>Mr. Krishnakanth Kondabolu</b>	Medicinal Chemistry	FY 08/09
<b>Mr. Kyle Lokuta</b>	Pharmacodynamics	FY 08/09
<b>Ms. Efe Odia</b>	Pharmaceutical Outcomes and Policy	FY 08/09
<b>Ms. Wan Sun</b>	Pharmaceutics	FY 08/09
<b>Mr. Jay Schaub</b>	Medicinal Chemistry	FY 07/08
<b>Dr. Heather Davis</b>	Pharmaceutics/Pharmacy Practice	FY 07/08
<b>Ms. Yue Liu</b>	Pharmacodynamics	FY 07/08
<b>Ms. Christine Lee</b>	Pharmaceutical Outcomes and Policy	FY 07/08
<b>Mr. John Benedet</b>	Medicinal Chemistry	FY 06/07
<b>Mr. Michael Weide</b>	Pharmaceutics	FY 06/07
<b>Ms. Heera Sharma</b>	Pharmacodynamics	FY 06/07

## Fullbright Capes Scholarships

The CAPES Foundation is a Brazilian government agency awarding scholarship grants to graduate students at universities and research centers in Brazil and abroad. Its central purpose is to coordinate efforts to improve the quality of faculties and staff in higher education through its grant program. *CAPES* is particularly concerned with the training of researchers in doctorate, pre-doctoral short-term research and post-doctorate scholar programs. At present *CAPES* supports about 22,000 students in Brazilian graduate programs and 1,500 in other countries. The recipient of the *Fullbright Capes Scholarship* is:

<b>Ms. Manuela Vieira</b>	Pharmaceutics	FY 07/08
---------------------------	---------------	----------

## Dean's Award

The *Dean's Award* is designated to acknowledge and enhance the academic development of a graduate student entering the second year of their graduate Ph.D. program who has excelled in both classroom and research activities. This award consists of a stipend supplement of \$3,000 per year for 3 years and is announced at the annual Post-baccalaureate Reception ([ORGS Coordinated Events for the COP; Post-baccalaureate Reception](#)). The recipient of the *Dean's Award* is:

<b>Mr. Michael Dismuke</b>	Pharmacodynamics	FY 07/08
----------------------------	------------------	----------

## Grinter Awards

Originated in 1988, the intent of the *Grinter Awards* program was to serve as a mechanism to recruit graduate students with outstanding academic credentials into one of the College's graduate programs. These awards come from monies

allocated from ORTGE on a college-by-college basis and supplement our existing state stipends, an additional \$3,000 per year for a maximum of 3 years (\$9,000 total award). A statistical summary of the *Grinter Awards* in the COP is illustrated in **Table 13**. Overall, we have had a 68.7% acceptance of *Grinter Awards* by prospective students. Sixty-three percent of the COP Grinter Awardees have graduated from the COP program with either a Ph.D. or M.S. degree. The overall average GPA for the Grinter Awardees is 3.57 with a GRE of 1237 and a TOEFL of 107.

**Table 13: Statistical Summary of the Grinter Program – 1988 to Present**

Statistic	Overall	%	09/10 Class
Total number offered	115		4
Total number accepted	79	68.7%	3
Total number graduated	50	63.3%	
Total number still enrolled: past & present	14	17.7%	
Number of active awardees	9	15.2%	3
Grade Point Average (GPA)	3.57		3.84
Graduate Record Exam -GRE (Verbal + Quant.)	1237		1123
Test of English as a Foreign Language (TOEFL)	107		93

This year the COP offered 3 new *Grinter Awards*. The recipients of the *Grinter Awards* are:

<b>Mr. Mongjen Chen</b>	Pharmaceutics	FY 09/10
<b>Ms. Caitlin Knox</b>	Pharmaceutical Outcomes and Policy	FY 09/10
<b>Ms. Rachel Rosenthal</b>	Pharmaceutical Outcomes and Policy	FY 09/10

<b>Ms. Erin Bruce</b>	Pharmacodynamics	FY 08/09
<b>Ms. Lilibeth Salvador</b>	Medicinal Chemistry	FY 08/09
<b>Mr. Bingcao Wu</b>	Pharmaceutical Outcomes and Policy	FY 08/09

<b>Ms. Xiaodi Feng</b>	Pharmacodynamics	FY 07/08
<b>Mr. Stephan Linden</b>	Pharmaceutical Outcomes and Policy	FY 07/08
<b>Ms. Qinli Ma</b>	Pharmaceutical Outcomes and Policy	FY 07/08

## 23<sup>rd</sup> Annual Research Showcase and Awards Recognition Day

A number of graduate students, post-doctoral fellows and professional students received cash awards and commemorative plaques for participating in the COP “Annual Research Showcase and Awards Recognition Day”. The specifics of this daylong event and the award winners are listed in **ORGS Coordinated Events for the COP**.

## International Student Academic Awards

At the International Student Academic Awards Ceremony held November 19, 2009, in the Reitz Union Auditorium, four of the College of Pharmacy’s international graduate students received a certificate award for outstanding academic accomplishment. The recipients of the *International Student Awards* are:

<b>Mr. Jason Kwan</b>	Medicinal Chemistry
<b>Ms. Manuela Vieira</b>	Pharmaceutics
<b>Mr. Pranav Gandhi</b>	Pharmaceutical Outcomes and Policy
<b>Mr. Mohamed E. Mohamed</b>	Pharmacotherapy & Translational Research

## UF Graduate Student Forum Awards

The Graduate Student Forum of the University of Florida was held on Wednesday, February 3, 2010. The College of Pharmacy had eight students who participated in the forum, one student in the oral competition and seven students in the poster competition. There were no winners this year from the College of Pharmacy. Those students who participated are:

**Ayad K. Ali**, Department of Pharmaceutical Outcomes and Policy, participated in the poster competition with his presentation entitled “*Postmarketing Safety Evaluation of Aliskiren Hemifumarate, a New Molecular Entity*”.

**Isabel Andueza**, Department of Pharmaceutics, participated in the oral and poster competitions with her presentation entitled “*Synthesis and Chemical Hydrolysis of Dextran-Methylprednisolone Conjugates as Ophthalmic Prodrug*”.

**Erica Haslach**, Department of Pharmacodynamics, participated in the poster competition with her presentation entitled “*Determination of Unique AGRP and MC4R Interactions the use of Stereochemical Modifications of Ligands and Receptor Mutagenesis*”.

**Christine Lee**, Department of Pharmaceutical Outcomes and Policy, participated in the poster competition with her presentation entitled “*Rasch Analysis of Hall’s Professionalism Scale*”.

**Stephan Linden**, Department of Pharmaceutical Outcomes and Policy, participated in the poster competition with his presentation entitled “*Do Cerebral Nervous System Stimulants affect the Number of Driving Accidents in Adolescents with Attention-Deficit/Hyperactivity Disorder?*”

**Qinli (Lily) Ma**, Department of Pharmaceutical Outcomes and Policy, participated in the poster competition with her presentation entitled “*Cost-utility Analysis of Rivaroxan versus Enoxaparin for Thromboprophylaxis among Patients Undergoing Hip Arthroplasty*”.

**Jay Schaub**, Department of Pharmacodynamics, participated in the poster competition with his presentation entitled “*The Sex Dependent Nature of the Obese Phenotype in Melanocortin-4 Receptor Knockout Mice*”.

**Bingcao Wu**, Department of Pharmaceutical Outcomes and Policy, participated in the poster competition with his presentation entitled “*Cost Utility Analysis of Certolizumab Pegol versus Natalizumab Maintenance Therapy for Crohn’s Disease*”.

## Graduate Minority Activities

The ORGS has continued to work with the Graduate School’s Office of Graduate Minority Programs (OGMP) in recruiting minority students into the College’s graduate programs. The ORGS filters information down to individual departments concerning funding opportunities for both graduate minority students as well as undergraduate minority students interested in a research career.

Names of interested minority students were passed on to the respective departmental chairs or graduate coordinators by Dr. Michael McKenzie, Associate Dean for Professional Affairs, following his various recruiting trips to colleges for our professional program. Each Department then follows up with a letter and application packet to the student(s) outlining their respective graduate program and its objectives.

## Research Activities in the College of Pharmacy

### Grant and Contract Efforts and Funding

Pharmaceutical research continues to be a major effort within the College of Pharmacy at the University of Florida. According to the American Association of Colleges of Pharmacy (AACP) annual listing of Colleges of Pharmacy and their placement relative to Schools of Pharmacy engaged in active pharmaceutical research, the University of Florida was ranked 19<sup>th</sup> this past year out of 60 schools with research programs as seen in **Table 14**. These placements are based solely on fiscal year NIH funding (October to September of a given year).

<b>Table 14: AACP Statistics for NIH Funding</b>					
NIH Fiscal Year	NIH Support	Rank	FTE Ph.D.'s	NIH Support/ FTE- Ph.D.	Rank
2005	\$5,999,517	13	35	\$171,415	18
2006	\$7,223,656	12	35	\$206,390	12
2007	\$4,959,305	20	35	\$141,494	23
2008	\$6,401,646	14	34	\$188,284	15
2009	\$6,081,908	19	34	\$178,880	22

Our faculty members continue to be productive and are making efforts to obtain more extramural support for their individual research efforts. During this year the ORGS processed a total of 134 extramural grant or contract applications from the five Departments and our Administrative Office for a total of \$73,992,734 in **new** grant dollars, see **Table 15**. This is a 10.9% increase in total dollars requested when compared to FY 08/09, see **Table 16**. The majority of new proposals (70.1%) within the COP are proposals in which the Principal Investigator (PI) is a faculty member within the COP (**Tables 15 and 16**). Research faculty members are also encouraged to collaborate with other units within the University. Thirty percent of grants submitted were originated outside of the College of Pharmacy.

**Table 17** shows total extramural research dollars brought into the College over the last five academic years (from July to June of a given fiscal year). This year our research funding dollars totaled \$10,552,669 with 101 individual awards coming into the College of Pharmacy. This represents an increase in total research funding dollars of 16.5% and an increase of just one more award from FY 08/09.

During FY 09/10 departmental comparisons show that Pharmacotherapy & Translational Research brought in the highest total of research dollars within the COP at 44.9% (\$4,740,996). Medicinal Chemistry was second at 18.5% (\$1,949,202); followed by Pharmacodynamics at 13.5% (\$1,422,553); Pharmaceuticals at 11.8% (\$1,250,164); and Pharmaceutical Outcomes and Policy at 11.3% (\$1,189,754).

**TOTAL EXTRAMURAL FUNDING** to the COP is illustrated in **Table 18**. Total extramural support includes not only **RESEARCH** funds (also found in **Table 17**) but also those **ADMINISTRATIVE** funds that included support for educational training activities. This year **ADMINISTRATIVE** funds showed a 33.5% decrease from the previous academic year.

The combination of a 15.7% increase in **RESEARCH** funds and a 33.5% decrease in **ADMINISTRATIVE** funds provided the College of Pharmacy with a 15.2% increase overall in FY 09/10 from FY 08/09 when **Total Extramural Funding** is considered (**Tables 18 and 19**).

**Table 15: Proposal Processing Summary**

Department	Inside the College	Outside the College	Total
<b>College Total</b>			
# Proposals	94	40	134
Total Amount	\$61,260,670	\$12,732,064	\$73,992,734
<b>Administration</b>			
# Proposals	1	0	1
Total Amount	\$20,908	\$0	\$20,908
<b>Medicinal Chemistry</b>			
# Proposals	13	11	24
Total Amount	\$15,257,194	\$2,507,416	\$17,764,610
<b>Pharmaceutics</b>			
# Proposals	13	7	20
Total Amount	\$3,601,507	\$4,533,956	\$8,135,463
<b>Pharmacodynamics</b>			
# Proposals	19	6	25
Total Amount	\$20,780,556	\$2,459,250	\$23,239,806
<b>Pharm. Outcomes &amp; Policy</b>			
# Proposals	13	6	19
Total Amount	\$9,763,389	\$2,326,931	\$12,090,320
<b>Pharm. &amp; Translational Research</b>			
# Proposals	35	10	45
Total Amount	\$11,837,116	\$904,511	\$12,741,627

Inside the College = PI was a COP faculty member; Outside the College = PI was outside the COP; COP personnel were co-investigators

**Table 16: Proposal Processing Comparison**

Fiscal Year	Inside the College	Outside the College	Total
<b>FY 08/09</b>			
# proposals	96	30	126
Total Amount	\$75,293,358	\$7,761,647	\$83,055,005
<b>FY 09/10</b>			
# proposals	94	40	134
Total Amount	\$61,260,670	\$12,732,064	\$73,992,734

Inside the College = PI was a COP faculty member; Outside the College = PI was outside the COP; COP personnel were co-investigators

**Table 17: Extramural Research Dollars - FY 05/06 to FY 09/10**

Department	05/06	06/07	07/08	08/09	09/10	05/06 - 09/10	% of total
<b>COLLEGE TOTAL</b>	<b>\$8,970,166</b>	<b>\$8,139,750</b>	<b>\$7,192,475</b>	<b>\$8,807,502</b>	<b>\$10,552,669</b>	<b>\$8,732,513</b>	<b>100.00%</b>
F&A	\$1,874,293	\$1,541,843	\$1,337,594	\$1,669,551	\$1,945,817	\$1,673,820	100.00%
# grants	104	98	91	100	101	99	
%F&A	26.4%	23.4%	22.8%	23.4%	22.6%	23.7%	
<b>Medicinal Chemistry</b>	<b>\$2,410,972</b>	<b>\$2,897,985</b>	<b>\$1,633,481</b>	<b>\$2,333,801</b>	<b>\$1,949,202</b>	<b>\$2,245,088</b>	<b>25.71%</b>
F&A	\$554,326	\$670,513	\$404,829	\$486,631	\$474,817	\$518,223	30.96%
# grants	23	25	13	14	10	17	
%F&A	29.9%	30.1%	32.9%	26.3%	32.2%	30.3%	
<b>Pharmaceutics</b>	<b>\$1,517,052</b>	<b>\$1,426,654</b>	<b>\$1,361,814</b>	<b>\$1,297,192</b>	<b>\$1,250,164</b>	<b>\$1,370,575</b>	<b>15.70%</b>
F&A	\$329,796	\$207,786	\$321,903	\$272,091	\$268,065	\$279,928	16.72%
# grants	28	25	19	24	17	23	
%F&A	27.8%	17.0%	31.0%	26.5%	27.3%	25.9%	
<b>Pharmacodynamics</b>	<b>\$1,597,340</b>	<b>\$639,931</b>	<b>\$963,262</b>	<b>\$1,695,696</b>	<b>\$1,422,553</b>	<b>\$1,263,756</b>	<b>14.47%</b>
F&A	\$466,000	\$175,896	\$262,392	\$492,574	\$403,359	\$360,044	21.51%
# grants	17	13	9	18	15	14	
%F&A	41.2%	37.9%	37.4%	40.9%	39.6%	39.4%	
<b>Pharm. Outcomes and Policy</b>	<b>\$182,532</b>	<b>\$422,547</b>	<b>\$321,697</b>	<b>\$716,193</b>	<b>\$1,189,754</b>	<b>\$566,545</b>	<b>6.49%</b>
F&A	\$18,282	\$63,300	\$72,864	\$142,039	\$81,474	\$75,592	4.52%
# grants	8	8	5	2	11	7	
%F&A	11.1%	17.6%	29.3%	24.7%	7.4%	18.0%	
<b>Pharm. &amp; Trans. Research</b>	<b>\$3,262,270</b>	<b>\$2,752,633</b>	<b>\$2,912,221</b>	<b>\$2,764,620</b>	<b>\$4,740,996</b>	<b>\$3,286,548</b>	<b>37.64%</b>
F&A	\$505,888	\$424,348	\$275,606	\$276,216	\$718,102	\$440,032	26.29%
# grants	28.0	27.0	45.0	42.0	48.0	38	
%F&A	18.4%	18.2%	10.5%	11.1%	17.9%	15.2%	

F&amp;A = Facilities and Administrative Costs

**Table 18: Total Extramural Support - FY 05/06 to FY 09/10**

Dept.	05/06	06/07	07/08	08/09	09/10	Average 05/06-09/10
<b>COLLEGE TOTAL</b>	<b>\$9,383,617</b>	<b>\$8,342,176</b>	<b>\$7,232,617</b>	<b>\$8,928,374</b>	<b>\$10,529,749</b>	<b>\$8,883,307</b>
F&A	\$1,874,293	\$1,541,843	\$1,350,704	\$1,689,699	\$1,913,035	\$1,673,915
# grants	107	99	92	104	102	100.8
%F&A	25.0%	22.7%	23.0%	23.3%	22.2%	23.2%
<b>RESEARCH</b>	<b>\$8,970,166</b>	<b>\$8,139,750</b>	<b>\$7,192,475</b>	<b>\$8,807,502</b>	<b>\$10,449,387</b>	<b>\$8,711,856</b>
F&A	\$1,874,293	\$1,541,843	\$1,337,594	\$1,669,551	\$1,913,035	\$1,667,263
# grants	104	98	91	100	100	98.6
%F&A	26.1%	23.5%	22.8%	23.4%	22.4%	23.6%
<b>ADMINISTRATION</b>	<b>\$413,451</b>	<b>\$202,426</b>	<b>\$40,142</b>	<b>\$120,872</b>	<b>\$80,362</b>	<b>\$171,451</b>
F&A	\$0	\$0	\$13,110	\$20,148	\$0	\$6,652
# grants	3	1	1	4	2	2.2
%F&A	0.0%	0.0%	48.5%	20.0%	0.0%	13.7%

F&amp;A = Facilities and Administrative Costs



Outlined below in **Table 19** is a breakdown of the COP extramural support by sponsor type and number of awards for the last two fiscal years. The College's main source of extramural support (73% of total) continues to be from Federal Agencies. Federal dollars were earmarked entirely for research purposes and showed a 5.1% increase in dollars as well as an 18.8% increase in the number of awards this year from FY 08/09. Noteworthy, is that only 10% of this year's total federal funding from NIH actually came from American Recovery and Reinvestment Act (ARRA) or stimulus dollars sources. State dollars were increased by 30%; Corporations and Companies showed a 54.1% increase in dollars received; and Foundation and Society monies showed a 20.1% decrease in the dollars received compared to FY 08/09. The College experienced a significant decrease of 81% in funding within the "Other" funding category from the previous year. Within this "Other" category are funds that include *Miscellaneous Donor* monies or funds in which faculty members have unrestricted use to support their individual research programs.

Sponsor Category	FY 08/09		FY 09/10	
	# of Awards	Total Dollars	# of Awards	Total Dollars
<b>Federal Agencies</b>	39	\$7,325,900	48	\$7,715,651
<b>Florida State Agencies</b>	6	\$239,838	5	\$342,432
<b>Corporations and Companies</b>	37	\$1,000,179	33	\$2,178,365
<b>Foundations and Societies</b>	17	\$357,625	11	\$285,841
<b>Other</b>	5	\$39,260	5	\$7,460
<b>Total Comparison</b>	<b>104</b>	<b>\$8,962,802</b>	<b>102</b>	<b>\$10,529,749</b>

A more complete breakdown and two-year comparison of sponsor categories, number of awards and total dollars including indirect costs can be seen in **Tables 20-24**. In **Appendix B** a complete listing of all extramural support by Department and Faculty members can be found.

Sponsor	FY 08/09			FY 09/10		
	Count	Total	F&A	Count	Total	F&A
<b>AHCA</b>	1	\$710,193	\$142,039	1	\$8,200	\$1,640
<b>AHRQ</b>				1	\$200,488	\$63,636
<b>Food &amp; Drug Administration</b>				2	\$847,841	\$0
<b>Natl Cntr for Dis Control &amp; Prev</b>				2	\$72,173	\$19,849
<b>NIH</b>	35	\$6,519,582	\$1,316,058	41	\$6,566,041	\$1,339,999
<b>U.S. Army</b>	3	\$96,125	\$30,415			
<b>U.S. Department of Veteran Affairs</b>				1	\$20,908	\$0
<b>Total Federal Agencies</b>	<b>39</b>	<b>\$7,325,900</b>	<b>\$1,488,512</b>	<b>48</b>	<b>\$7,715,651</b>	<b>\$1,425,124</b>

F&A = Facilities and Administrative Costs

Sponsor	FY 08/09			FY 09/10		
	Count	Total	F&A	Count	Total	F&A
<b>Department of Citrus</b>	2	\$80,000	\$7,273	1	\$120,000	\$10,909
<b>Department of Health</b>	4	\$159,838	\$729	4	\$222,432	\$6,586
<b>Total Florida State Agencies</b>	<b>6</b>	<b>\$239,838</b>	<b>\$8,002</b>	<b>5</b>	<b>\$342,432</b>	<b>\$17,495</b>

F&A = Facilities and Administrative Costs

**Table 22: Corporations and Companies Comparison**

Sponsor	FY 08/09			FY 09/10		
	Count	Total	F&A	Count	Total	F&A
Alcon Research	1	\$70,000	\$14,444			
Alnara Pharmaceuticals	2	\$4,541	\$908			
Altus Pharmaceuticals	4	\$23,160	\$4,632			
American Home Products	1	\$13,513	\$2,788			
AstraZeneca				1	\$55,625	\$11,125
Boeringer Ingelheim Intl GMBH				1	\$71,617	\$22,731
Cephalon				1	\$56,625	\$11,325
Compelware Corporation				7	\$193,583	\$38,716
Finzelberg GMBH & Co. KG	1	\$37,000	\$7,400			
Genentech, Inc.	1	\$4,375	\$875			
Glaxo Smith Kline, Inc.	4	\$106,000	\$21,200	2	\$29,600	\$5,920
Golin-Harris Int'l, Inc.	1	\$5,000	\$1,000	1	\$5,000	\$1,000
Hoffmann La Roche, Inc.				1	\$337,740	\$107,201
IVAX Corporation	1	\$26,965	\$5,393			
Johns Hopkins University				2	\$105,732	\$9,612
Johnson & Johnson	5	\$240,590	\$53,278	1	\$53,209	\$10,642
Kasima Medical Dev AB	1	\$22,446	\$4,489			
Max Zeller Sohne	1	\$35,000	\$7,000			
Merck Selbstmedikation GMBH	1	\$35,000	\$7,000			
Micromedic Technologies	1	\$15,500	\$0			
Miscellaneous Donors				1	\$1,900	\$0
Ortho McNeil Janssen Sci Affairs				1	\$371,700	\$76,700
OsmoPharm USA	1	\$10,000	\$909	1	\$4,980	\$453
Pascoe GMBH	2	\$4,973	\$995			
Pfizer, Inc.	1	\$100,000	\$0	1	\$100,000	\$0
Qualia Clinical Services	1	\$10,000	\$2,000			
Research triangle Institute				4	\$53,600	\$4,873
Sanofi Aventis				1	\$514,419	\$106,150
SkyePharma	4	\$33,586	\$6,717			
Steigerwald Arzneimittelwerk	2	\$39,855	\$7,971	1	\$26,989	\$5,398
TKL Research				4	\$89,834	\$17,967
Trius Therapeutics	1	\$162,675	\$32,535	1	\$81,337	\$16,268
Watson Laboratories				1	\$24,875	\$4,975
<b>Total Corporations and Companies</b>	<b>37</b>	<b>\$1,000,179</b>	<b>\$181,534</b>	<b>33</b>	<b>\$2,178,365</b>	<b>\$451,056</b>

F&amp;A = Facilities and Administrative Costs

**Table 23: Foundations and Societies Comparison**

Sponsor	FY 08/09			FY 09/10		
	Count	Total	F&A	Count	Total	F&A
Alpha One Foundation	1	\$56,936	\$0	1	\$56,936	\$0
Am. Association of University Women	2	\$20,000	\$0			
Am. Foundation for Pharmaceutical Edu.	1	\$6,000	\$0	1	\$6,000	\$0
American Heart Association	2	\$170,500	\$15,500			
Colorado State University				1	\$22,479	\$1,216
Epilepsy Foundation of America				1	\$3,000	\$0
Johns Hopkins University				1	\$115,565	\$15,074
Multiple Sponsors				1	\$360	\$72
Nemours Children's Clinic	5	\$22,168	\$2,015	4	\$22,048	\$2,004
Shands Teaching Hospital	1	\$59,176	\$0	1	\$59,454	\$0
University of Florida Foundation	4	\$3,008	\$0			
U.S.-Israel Binational Science Foundation	1	\$19,837	\$2,587			
<b>Total Foundations and Societies</b>	<b>17</b>	<b>\$357,625</b>	<b>\$20,102</b>	<b>11</b>	<b>\$285,842</b>	<b>\$18,366</b>

F&amp;A = Facilities and Administrative Costs

**Table 24: Other Comparison**

Sponsor	FY 08/09			FY 09/10		
	Count	Total	F&A	Count	Total	F&A
Miscellaneous Donors	2	\$21,978	\$0	1	\$200	\$0
Multiple Sponsors	3	\$17,282	\$1,813	4	\$7,260	\$994
<b>Total Other</b>	<b>5</b>	<b>\$39,260</b>	<b>\$1,813</b>	<b>5</b>	<b>\$7,460</b>	<b>\$994</b>

F&amp;A = Facilities and Administrative Costs

## Licensing and Royalty Income

Through licensing and maintenance fees the College of Pharmacy generated a total of \$9,990 in revenues during FY 09/10. These monies were distributed to the College as outlined in the UF IP distribution policy.

## Graduate Student Research Activities and Awards

**Heather Davis**, a graduate student in the Department of Pharmacotherapy & Translational Research working with Dr. Julie Johnson, is the recipient of the ASCPT Presidential Trainee Award and received a commemorative plaque and complimentary registration from ASCPT for her abstract entitled “*Clinical Association of Variation in the  $\beta 2$  Regulatory Subunit of the Voltage-gated Calcium Channel (CACNB2) with Outcomes in Hypertensive Coronary Artery Disease (CAD) Patients*” to attend the ASCPT 2010 Annual Meeting in Atlanta, GA in March 2010. In addition to the Presidential Trainee Award, Heather was also selected to receive the 2010 Jason Morrow Trainee Award which is awarded to the one Presidential Trainee who had the top rated abstract. Heather will be recognized for this honor at the opening session of the ASCPT meeting and will receive a commemorative plaque and cash award.

**Daniel Gonzalez**, a graduate student in the Department of Pharmaceutics working with Dr. Hartmut Derendorf, received a \$1,000 honorarium, an engraved certificate and a complimentary annual meeting registration from the **American Colleges of Clinical Pharmacology (ACCP)** for his abstract entitled “*Effects of Plasma Protein Binding on Half-life of Elimination*” to attend the ACCP Annual Meeting in Anaheim, CA. Daniel was also awarded a \$6,000 fellowship from the **American Foundation for Pharmaceutical Education (AFPE)** for his project entitled “*Breath Based Therapeutic Drug/Adherence Monitoring for Valproic Acids*”.

**Christine Lee**, a graduate student in the Department of Pharmaceutical Outcomes and Policy working with Dr. Richard Segal, was awarded a \$6,000 fellowship from the **American Foundation for Pharmaceutical Education (AFPE)** for her project entitled “*Increasing Community Pharmacists Smoking Cessation Counseling Rate through Professional Moral Engagement*”.

**Wenjun Li**, a graduate student in the Department of Medicinal Chemistry working with Dr. Margaret James, received a certificate, \$400 cash award, \$600 travel award and complimentary registration from the **ASPET** for her paper entitled “*Mitochondrion is a Novel Site of Biotransformation of Dichloroacetate by Glutathione Transferase Zeta*” to attend the Experimental Biology 2010 Meeting in Anaheim, CA in April 2010.

**Jay Schaub**, a graduate student in the Department of Pharmacodynamics working with Dr. Carrie Haskell-Luevano, was awarded a \$6,000 fellowship from the **American Foundation for Pharmaceutical Education (AFPE)** for his project entitled “*Effects of Voluntary Exercise on the Central Melanocortin Receptor Knockout Mice*”.

## Professional Student Research Activities and Awards

As the understanding of the development of new pharmaceutical agents and streamlining the drug use process is an integral part of a pharmacy student’s education, the College of Pharmacy offers a series of “**Problems In Pharmacy**” courses that expose students to various aspects of the research process. Each department in the College offers a “**Problems In Pharmacy**” course that is designed to specifically target their individual research areas. In addition to the “**Problems In Pharmacy**” courses, professional students interested in research select faculty mentors and submit grant or fellowship applications to outside funding agencies to support their research efforts. This year we had 1 professional student secure extramural funding.

**Megan Hames**, a professional student working with Dr. Amber Beitelshes in the Department of Pharmacotherapy & Translational Research, received an engraved certificate as runner up for Best Student Poster, a travel award and complimentary registration from the **American College of Clinical Pharmacy (ACCP)** for her poster entitled “*Aromatase Genotype is Associated with Outcomes in the International Verapamil SR/Trandolapril Study (INVEST)*” at the ACCP Annual Meeting in Anaheim, CA in October 2009.

## Post-doctoral Fellow Research Activities and Awards

**Dr. Christian Hampp**, a post-doctoral fellow in the Department of Pharmaceutical Outcomes and Policy working with Dr. Almut Winterstein, was the recipient of an ISPOR Research Presentation Award from the **International Society for Pharmacoeconomics and Outcomes Research (ISPOR)** for his presentation entitled “*Cost-effectiveness of Respiratory Syncytial Virus Prophylaxis with Palivizumab from the Perspective of a Southern US Medicaid Agency*” at the 12<sup>th</sup> Annual European Congress Conference in Paris, France in October 2009.

**Dr. Anamika (Ana) Singh**, a post-doctoral fellow in the Department of Pharmacodynamics working with Dr. Carrie Haskell-Luevano, received the prestigious and highly competitive \$1,000 travel award from the **American Chemical Society, Division of Medicinal Chemistry** to present her poster entitled “*Design, Synthesis and Characterization of the Novel Analogues of Chimeric AGRP- melanocortin Peptide Targeting Melanocortin Receptors*” at the 239<sup>th</sup> ACS National Meeting and Exposition in San Francisco, CA in March 2010.

## **U.S.-Thai Consortium Activities**

### **History of the U.S.-Thai Consortium**

In 1993, the University of Florida College of Pharmacy, nine other U.S. Pharmacy Schools and the American Association of Colleges of Pharmacy entered into an international agreement with all nine (at that time) Thailand Colleges of Pharmacy which together designated the U.S.-Thai Consortium Agreement.

The mission of this U.S.-Thai agreement is to provide Thai pharmacists (faculty at the various Thai pharmacy schools), that are selected by a Royal Thai Government Panel, the opportunity for advanced professional (Pharm.D.) or graduate (Ph.D.) study in programs in the selected U.S. pharmacy schools. In return, the Royal Thai government will pay all stipend and tuition costs for these students for a period of five years and provide return favors for both professional students and faculty to visit Thailand and become involved in post-graduate pharmacy education abroad. Furthermore, the initial agreement was for the Thai government to support, and the U.S. colleges to educate, 100 Thai faculty members (i.e., approximately 10 students per U.S. college) over the ensuing 10 years.

As part of the original charter, it was agreed that all parties would meet once a year to discuss the progress of the U.S.-Thai Consortium. These annual meetings would be held in either Thailand or the U.S. on alternating years. The first meeting was held in Bangkok, Thailand in 1994; at Purdue University in 1995; at Phuket, Thailand in 1996; in Baltimore, MD in 1997; Chiang Mai, Thailand in 1998; Orlando, FL in 2000; Bangkok, Thailand in 2002; Chicago, IL in 2004; Bangkok, Thailand in 2007; and Madison, Wisconsin in 2008.

### **Current List of Thai and U.S. Schools of Pharmacy in the Consortium**

#### **Thai**

1. Chulalongkorn University
2. Mahidol University
3. Khon Kaen University
4. Srinakharinwirot University
5. Prince of Songkla University
6. Silpakorn University
7. Ubon Ratchathani University
8. Chiang Mai University
9. Naresuan University
10. Thammasat University
11. Rangsit University
12. Walailak University

#### **U.S.**

1. University of Florida
2. Purdue University
3. Ohio State University
4. University of Wisconsin
5. University of Arizona
6. University of Minnesota
7. University of Illinois at Chicago
8. University of Maryland at Baltimore
9. University of North Carolina
10. Rutgers University
11. University of Kentucky
12. University of Texas
13. University of Washington
14. University of Utah

### **11<sup>th</sup> U.S.-Thai Pharmacy Education Consortium Meeting**

The meeting that was scheduled during 2010 has been postponed with plans to convene a meeting in May 2011.

## ORGS Coordinated Events

Two major COP functions are coordinated by the ORGS, the Post-baccalaureate Reception and the Annual Research Showcase and Awards Recognition Day. These events are described below.

### Post-baccalaureate Reception

The annual Post-baccalaureate Reception is held at the beginning of the Fall Semester as an event to introduce all **new** faculty, graduate students, post-doctoral fellows and research associates to the COP community. This year the event was held on Wednesday, September 16, 2009, in the Grand Ballroom at the Reitz Student Union from 6:00 PM to 8:00 PM. This year we had 121 faculty, staff and students. At the reception this year 14 new graduate students, 10 new faculty, and a number of new post-doctoral fellows, research associates and visiting scientists were introduced to the college.

### Annual Research Showcase and Awards Recognition Day

The 23<sup>rd</sup> Annual Research Showcase and Awards Recognition Day took place on Thursday, February 18, 2010, at the University of Florida, College of Pharmacy. A program booklet (**Appendix C**) is included that outlines the day's events, a complete list of competitors for each of the divisions and the judges for each of the events.

This year's Showcase and Awards Recognition Day could not have taken place without the financial backing of our many sponsors. Our major sponsor this year was **Dr. Robert R. and Stephanie Ruffolo** of Spring City, PA. Other longtime supporters are **Dr. Robert G. and Maria Bell** of Palm Harbor, FL, Ph.D. Class of 1988; **Dr. Robert C. Crisafi** of Winchester, MA, Ph.D. Class of 1956; **Dr. Maureen McKenzie** of Soldotna, Alaska, through *DENALI BioTechnologies, LLC*; and **Dr. Robert A. and Phyllis Levitt** of Boca Raton and Gainesville, FL, Ph.D. Class of 1961, sponsoring the *Levitt Division* of the Oral Competition. For a complete list of our sponsors please refer to the program booklet.

The Showcase and Awards Recognition Day is full of excitement and discovery, as graduate students, pharmacy students and post-doctoral fellows from throughout the College compete (via posters and platform presentations) for the distinction of being the "best" in one of the following categories:

#### Oral Competition

- Senior Graduate Division
- Junior Graduate Division
- Levitt Division

#### Poster Competition

- Post-doctoral Fellow Division
- Pharmacy Student Division
- Graduate Student Division

The finalists for the oral competition divisions submitted competitive abstracts that were reviewed and selected by the Graduate Studies Committee within the College. The *Senior Graduate Division* of the Oral Competition applies to those graduate students who are in the final stages of their graduate education. The *Junior Graduate Division* pertains only to graduate students who are in the first two years of their graduate program. The *Levitt Division* was established in 1993 to recognize those graduate students who are doing graduate work related in the areas of health outcomes research or related translational research in the clinical sciences.

The finalists in each of the oral divisions give a 12-15 minute presentation followed by a 3-5 minute question/answer period. Based on the student's abstract and their presentation, a winner in each division is selected by a panel of judges. Winners receive a \$600 cash award and commemorative plaque. Each of the finalists receives a \$300 cash award and a commemorative plaque.

Judges for the oral competition were: **Dr. A. Waseem Malick**, Vice President, Pharmaceutical & Analytical Research and Development, Hoffman-LaRoche, Inc.; **Dr. Folakemi T. Odedina**, Professor, Department of Pharmaceutical Outcomes and Policy, College of Pharmacy; **Dr. Robert R. Ruffolo**, Retired President, Research and Development, Wyeth Corporation; **Dr. Nicolas Simpson**, Assistant Professor, Department of Endocrinology, College of Medicine.

The winners of the oral competition are:

#### *Senior Division – winner*

**Mohamed Eslam Mohamed**

Pharmacotherapy & Translational Research

\$600 cash award

Title: "Screening for Unidentified Herb-drug Interactions: Looking Beyond Cytochrome P450"

#### *Senior Division – finalists*

**Jason Kwan**

Medicinal Chemistry

\$300 cash award

Title: "Grassystatins A-C from Marine Cyanobacteria, Potent Cathepsin E Inhibitors that Reduce Antigen Presentation"

**Benjamin Wu** Pharmaceuticals \$300 cash award  
Title: “Population Pharmacokinetic/Pharmacodynamic and Linear Regression Models for Type 2 Diabetes”

**Junior Division – winner**

**Jay Schaub** Pharmacodynamics \$600 cash award  
Title: “Onset of Increased Adiposity of the Melanocortin-3 Receptor Knockout Mouse is Prevented by Voluntary Exercise”

**Junior Division – finalists**

**Huong Le** Pharmaceuticals \$300 cash award  
Title: “Effect of Gelsolin and AAT Therapy on Brain Injury caused by Stroke”

**Erica Haslach** Pharmacodynamics \$300 cash award  
Title: “Determination of Unique AGRP and MC4R Interactions: Use of Stereochemical Modifications of Ligands and Receptor Mutagenesis”

**Levitt Division – winner**

**Stephan Linden** Pharmaceutical Outcomes and Policy \$600 cash award  
Title: “Do Central Nervous System Stimulants Affect the Number of Driving Accidents in Adolescents with Attention-Deficit/Hyperactivity Disorder?”

**Levitt Division – finalist**

**Ayad Ali** Pharmaceutical Outcomes and Policy \$300 cash award  
Title: “Pharmacovigilance Study for Postmarketing Safety Evaluation of Aliskiren Hemifumarate, a New Molecular Entity”

For the poster competition this year we had 43 posters from graduate students, pharmacy students and post-doctoral fellows on display in the Reception Area of the Health Profession, Nursing and Pharmacy Building (HPNP). The posters were manned between 9:30 AM and 11:30 AM when individual judging took place. The winners in each of the divisions received a \$300 cash award and a commemorative plaque.

The poster judges were: **Dr. John Abernethy**, Medical Director, Nanotherapeutics, Inc.; **Dr. Rachel Hrabchak**, Clinical Assistant Professor, Department of Pharmacotherapy & Translational Research, College of Pharmacy; **Dr. Carol Kobulnicky**, Associate Professor, Department of Pharmacy Administration, College of Pharmacy, University of Wyoming; **Dr. Burcin Unel**, Clinical Assistant Professor, Department of Pharmaceutical Outcomes and Policy, College of Pharmacy; **Dr. Karen Whalen**, Regional Director, WPPD Program, Department of Pharmacotherapy & Translational Research, College of Pharmacy; **Dr. Haojie Zhu**, Clinical Assistant Professor, Department of Pharmacotherapy & Translational Research, College of Pharmacy.

The winners of the poster competition are:

**Graduate Student Division – winners**

**Yuan Gu** Medicinal Chemistry \$300 cash award  
Title: “Age-related Changes in Expression and Activity of Glutathione Transferase Zeta (GSTz) I Human Liver”

**Benjamin Weber** Pharmaceuticals \$300 cash award  
Title: “Simulation-based evaluation of  $T_{max}$  as a Pharmacokinetic Parameter to Assess Bioequivalence of Inhaled Corticosteroids”

**Pharmacy Student Division – winner**

**Megan Hames** Pharmacotherapy & Translational Research \$300 cash award  
Title: “Aromatase Genotypes Associated with Outcomes in the International Verapamil SR/Trandolapril Study (INVEST)”

**Post-doctoral Fellow Division – winners**

**Dr. Maximilian Lobmeyer** Pharmacotherapy & Translational Research \$300 cash award  
Title: “Polymorphisms in Genes Coding for GRK2 and GRK5 and Response Differences in Treated Hypertensive Patients”

**Dr. Anamika Singh** Pharmacodynamics \$300 cash award  
Title: “Structural Characterization of the Potent and Selective Peptide-Peptidomimetic Hybrid Melanocortin Receptor Analogues”

## Other ORGS Activities

In addition to the two major functions coordinated by the ORGS (Post-baccalaureate Reception and the Annual Research Showcase and Awards Recognition Day) other activities were performed or attended by ORGS personnel as outlined below.

### Committee Assignments

The Executive Associate Dean served on various College, Health Science Center and University Committees throughout the academic year.

#### COLLEGE COMMITTEES

- **Executive Council**: This committee met each month throughout the year to discuss relevant issues related to the daily operations of the College and long-range planning. Chaired by the Dean of the College, this committee is integral to assisting the Dean in making decisions on major initiatives in the College.
- **Graduate Studies Committee**: Please see **Graduate Education and Program Activities**; **Graduate Studies Committee (GSC) Activities** for details and activities of this committee throughout the year.
- **College Space and Equipment Committee**: The Executive Associate Dean serves as chair of the College Space Committee. This committee was established to prepare a written policy document on allocation and reallocation of research and office space. The committee met twice this academic year and will continue to meet as needed to revise policies and review any new edits regarding the utilization of research space in the future.
- **Faculty Governance Council**: The Executive Associate Dean serves as a non-voting ex-officio member of the Faculty Governance Council. The Faculty Governance Council (FGC) is comprised of faculty and college administration, who together make policies relevant to the faculty. The FGC met nine times this past year.

#### HEALTH SCIENCE CENTER (HSC) COMMITTEES

- **HSC Research Dean's Group**: This committee met monthly throughout the year to discuss relevant issues related to both basic and clinical research within the HSC and University.
- **Anatomical Specimen Task Force**: This committee met twice throughout the year to consider current and future policies and use of cadavers and human specimens within the HSC teaching facilities.
- **HSC Traffic and Parking Task Force**: This committee met four times throughout the academic year to consider issues and establish policies related to parking and traffic patterns in and around the HSC.

#### UNIVERSITY COMMITTEES

- **Council of Graduate Deans**: This committee met once per semester during the academic year and was entrusted with making recommendations on major initiatives related to graduate education. The chair of this committee was Dr. Kenneth Gerhardt, Associate Dean for Graduate Programs.
- **Land Use Facilities Planning Committee**: The Executive Associate Dean was appointed to this committee for an additional three year term and this past year served as the Chair of the Committee. This committee met monthly to provide recommendations to UF entities related to policies related to UF land use and facilities development. The breadth of this committee considered the land use for new building sites as well as planning for proposed renovation of existing buildings. Our charge was to also assist in the development and updating of the UF Master Plan related to land and building use.
- **Academic Infrastructure Council**: As chair of the Land Use and Facilities Planning Committee the Executive Associate Dean is also a member of the Senate's Academic Infrastructure Council. This council's area encompasses the University's infrastructure supporting the University's academic mission, including the provision of physical facilities and other physical resources; libraries; information technology; the campus master plan; and the availability of adequate computer, classroom, laboratory and other resources. This Committee met monthly throughout the Fall and Spring Semesters of 2009-2010.



- **University of Florida Community Campaign:** The Executive Associate Dean and the Executive Secretary served as the faculty and staff coordinators for the College's effort for this campaign. The duties included selecting departmental assistants as well as making sure information was distributed properly to all COP personnel.

### **Conferences Attended Related to ORGS and COP Activity**

- **COP National Advisory Board:** The Executive Associate Dean attended the Fall 2009 (September) and Spring 2010 (April) National Advisory Board Meetings.
- **AACP Interim Meeting:** The Executive Associate Dean attended the 2009 AACP Interim Meeting in Arlington, VA, from February 6<sup>th</sup> to February 9<sup>th</sup>, 2010.
- **AACP Annual Meeting:** The Executive Associate Dean attended the 2009 AACP Annual Meeting in Boston, MA, from July 18<sup>th</sup> to July 22<sup>th</sup>, 2009.
- **SRA International Meeting:** The Grants Specialist attended the 2009 Annual Society of Research Administrators (SRA) International Meeting in Seattle, WA from October 17<sup>th</sup> to October 21<sup>st</sup>, 2009.

# Appendices

## Section

**A** = Letter to Graduate Applicants

**B** = Complete Listing of Extramural Support by Department and Faculty

**C** = 23<sup>rd</sup> Annual Research Showcase and Awards Recognition Day Booklet

Dear Applicant:

Thank you for your interest in graduate education in the College of Pharmacy at the University of Florida. The College of Pharmacy currently has four major areas of graduate concentration. These areas include Medicinal Chemistry, Pharmaceutics, Pharmacodynamics and Pharmaceutical Outcomes and Policy. In your letter you did not indicate which graduate area(s) of study you are interested in.

We ask at this time that you please specify your area of research concentration. In doing this you would certainly expedite the application process and minimize the receipt of extra information about areas of research you have no interest in.

All College of Pharmacy graduate programs can be accessed on the World Wide Web (<http://www.cop.ufl.edu>). Using the WWW you would get a comprehensive review of the underlying theme of each of our graduate programs as well as the faculty and their research interests. Furthermore, you can download all application and admission forms for graduate study at the University of Florida from this web site. I strongly encourage you to utilize this source of information (WWW), as this is your most efficient mechanism to apply to one or more of the graduate programs in the College of Pharmacy.

In the event that you do not have access to the WWW, listed below is each of the Graduate Programs in the College of Pharmacy. We have included a short overview of the area of graduate concentration with the name, address, phone number and e-mail address of the respective graduate coordinator.

#### **Graduate Program in Medicinal Chemistry**

Medicinal Chemistry is a unique blend of the physical and biological sciences. The scope of the field is sufficiently broad to give students with many different science backgrounds a rewarding and challenging program of study. Areas of active research include natural products, chemistry, drug delivery systems, organic synthesis of medicinal agents, metal chelate design, drug metabolism, molecular toxicology, molecular biology, analytical and forensic chemistry, molecular modeling and drug discovery. The department has excellent facilities for research in the major areas of Medicinal Chemistry and faculty have been highly successful in attracting extramural research support for the past several years.

**Graduate Coordinator:** Dr. Raymond Bergeron  
Department of Medicinal Chemistry  
PO Box 100485  
College of Pharmacy, University of Florida  
Gainesville, Florida 32610-0485  
(352) 273-7726, E-mail: [bergeron@mc.cop.ufl.edu](mailto:bergeron@mc.cop.ufl.edu)

#### **Graduate Program in Pharmaceutics**

Research in the Pharmaceutics Department encompasses basic, applied, and clinical investigations in (i) pharmacokinetics/biopharmaceutics, (ii) pharmaceutical analysis, (iii) pharmaceutical biotechnology and drug delivery. In addition to teaching, all faculty members are involved in collaborative research projects with clinical and other basic scientists with the Health Center or on campus. Many maintain collaborative ties with scientists in other universities and the pharmaceutical industry worldwide.

**Graduate Coordinator:** Dr. Tony Palmieri  
Department of Pharmaceutics  
PO Box 100494  
College of Pharmacy, University of Florida  
Gainesville, Florida 32610-0494  
(352) 273-7868, E-mail: [palmieri@cop.ufl.edu](mailto:palmieri@cop.ufl.edu)

#### **Training Program in Clinical Pharmaceutical Sciences**

The Clinical Pharmaceutical Sciences training program is a collaborative effort between the Departments of [Pharmacotherapy & Translational Research](#) and [Pharmaceutics](#). The goal of the Clinical Pharmaceutical Sciences training program is to prepare motivated individuals to pursue independent research careers in academia, industry, or government. The current research focus of the program is on understanding genetic and non-genetic factors that contribute to variability in drug response. Selected areas of research include cardiology, infectious disease, asthma/pulmonary, psychiatry, and clinical pharmacology/drug

metabolism. Students in the program conduct hypothesis-driven clinical research that includes a strong laboratory element. Excellent research facilities are available including state-of-the art bioanalytical and pharmacogenomics laboratories, and an NIH-funded [Clinical and Translational Science Institute](#) for clinical study conduction.

**Graduate Coordinator:** Dr. Reginald F. Frye  
Department of Pharmacotherapy & Translational Research  
Box 100486  
College of Pharmacy, University of Florida  
Gainesville, Florida 32610-0486  
(352) 273-5453, E-mail: [frye@cop.ufl.edu](mailto:frye@cop.ufl.edu)

#### **Graduate Program in Pharmaceutical Outcomes and Policy**

Drug therapy is the most widely used and efficacious treatment modality available for a variety of health disorders. However, problems (inappropriate prescribing, inadequate monitoring, and misuse of medication) with medication use are persistent and costly. Research and course of study in the Department of Pharmaceutical Outcomes and Policy focuses on various issues related to societal use of medications and include (i) estimating costs of drug-related morbidity and mortality, (ii) evaluating the prescribing process, medication use and related health care activities and, (iii) examining ways to improve prescribing and use of medications in various health care systems.

**Graduate Coordinator:** Dr. Richard Segal  
Department of Pharmaceutical Outcomes and Policy  
PO Box 100496  
College of Pharmacy, University of Florida  
Gainesville, Florida 32610-0496  
(352) 273-6265, E-mail: [segal@cop.ufl.edu](mailto:segal@cop.ufl.edu)

#### **Graduate Program in Pharmacodynamics**

The purpose of the graduate program in Pharmacodynamics is to develop biomedical scientists with a broad knowledge in the areas of Physiology, Pharmacology, Endocrinology and Toxicology. Although the research interests of the faculty are broad, there is an emphasis on the holistic approach to drug actions in living systems. The Department has strong programs in the areas of cardiovascular, reproductive and neuroendocrine physiology and pharmacology, temperature regulation, neurobiology of aging, autonomic pharmacology, and neuropharmacology.

**Graduate Coordinator:** Dr. Michael Katovich  
Department of Pharmacodynamics  
PO Box 100487  
College of Pharmacy, University of Florida  
Gainesville, Florida 32610-0487  
(352) 273-7690, E-mail: [katovich@cop.ufl.edu](mailto:katovich@cop.ufl.edu)

Please direct any future questions or request for application materials concerning the area of study you are interested in to the graduate coordinator of the respective department listed above.

If we can be of further assistance to you please call us at (352) 273-6301. Again, thank you for your interest in our college at the University of Florida. We look forward to hearing from you and eventually, receiving your application forms.

Respectfully,



William J. Millard, Ph.D.  
Executive Associate Dean  
University of Florida  
College of Pharmacy

Respectfully,



Deborah Bambarola  
Grants Specialist  
Office for Research and Graduate Studies  
University of Florida  
College of Pharmacy

## Complete Listing of Extramural Support in the COP for FY 09/10

### ADMINISTRATION

Faculty	Amount	Number	Agency	Project Title
<b>William Millard</b>	\$20,908	1	US Department of Veterans Affairs	Professional Services Contract
	\$59,454	1	Shands Teaching Hospital	Shands "Quasi" Endowment Fund

### MEDICINAL CHEMISTRY

Faculty	Amount	Number	Agency	Project Title
<b>Raymond Bergeron</b>	\$647,279	1	National Institute of Health	Iron Chelators Predicated on Desferrithiocin
<b>Raymond Booth</b>	\$572,499	2	National Institute of Health	Novel 5HT2C Agonist Drugs with 5HT2A Antagonist Activity for Cocaine Addiction
	\$406,031	3	National Institute of Health	Serotonin 5HT2C Agonist Ligands with 5HT2A/B Antagonist Activity
<b>Margaret James</b>	\$64,747	1	National Institute of Health	Modulation of Steroid Sulfation by Celecosib-like Drugs
	\$10,274	1	National Institute of Health	Pharmacotoxicology of Trichloroethylene Metabolites
<b>Hendrik Luesch</b>	\$156,541	1	National Institute of Health	Activation of the Cancer Preventive Nrf2-ARE Pathway by Seaweed
	\$332,299	1	National Institute of Health	Pilot-scale Libraries of Marine Cyanobacterial Natural Products

**PHARMACEUTICS**

<b>Faculty</b>	<b>Amount</b>	<b>Number</b>	<b>Agency</b>	<b>Project Title</b>
<b>Veronika Butterweck</b>	\$5,000	1	Golin-Harris International Inc.	Consulting Services on the Florida Department of Citrus Grapefruit-drug Interaction Program
	\$26,989	1	Steigerwalk Arzneimittelwerk	Gene Expression Profiling in Rat Brain Tissues Exposed to St. Johns Wort Treatment and Chronic Mild Stress
	\$120,000	1	Florida Department of Citrus	The Center for Food-drug Interaction
<b>Hartmut Derendorf</b>	\$337,740	1	Hoffmann LaRoche Inc.	Optimizing SiRNA Delivery Dosage Form Design for Receptor Mediated Endocytosis
	\$81,338	1	Trius Therapeutics	Trius II Microdialysis Study - TR701-102
	\$53,209	1	Johnson and Johnson	Exploratory Study to Evaluate the Penetration of J&J 32729463-EDI-1003
	\$100,000	1	Pfizer Inc.	Pfizer Graduate Fellowship Award
	\$20,102	1	National Institute of Health	Pharmacokinetic/Pharmacodynamic Modeling of the Psychomotor Vigilance, Simulated Driving, Go/No-Go Performance, and Electroencephalogram Effects of Armodafinil in Sleep Deprived Healthy Adults
	\$71,617	1	Boehringer Ingelheim Intl.	Comparative Dissolution Study of Commercial Telmisartan Tablets
<b>Guenther Hochhaus</b>	\$72,432	2	Florida Department of Health	Light-triggered Carrier Drug Release for Treatment of Disseminated Cancer
	\$4,980	1	Osmopharm USA	Huperzine A in Human Plasma
	\$55,625	1	Astrazeneca	Budesonide and Ciclesonide: Effect of Tissue Binding on Pulmonary Receptor Binding after Inhalation
	\$1,900	1	Miscellaneous Donors	Miscellaneous Donors
<b>Sihong Song</b>	\$241,648	2	National Institute of Health	Recombinant AAV for Correction of Genetic Abnormalities
	\$56,936	1	Alpha One Foundation	Development of AAT Deficient Mouse Models

**PHARMACODYNAMICS**

<b>Faculty</b>	<b>Amount</b>	<b>Number</b>	<b>Agency</b>	<b>Project Title</b>
<b>Carrie Haskell-Luevano</b>	\$388,796	2	National Institute of Health	Endogenous G-protein Coupled Receptor Antagonists
	\$15,214	1	University of Cincinnati	Discovery of Alpha-MSM Analog for Skin Cancer Prevention
	\$219,750	1	National Institute of Health	Structural Determinants of Neuroendocrine Receptors
	\$6,000	1	American Foundation for Pharmaceutical Education	AFPE Pre-doctoral Fellowship in the Pharmaceutical Sciences
<b>Michael Katovich</b>	\$40,932	1	National Institute of Health	AT1 Receptor Control in Chronic Hypertension Attenuation
	\$34,228	1	National Institute of Health	ACE2 as a Target for Pulmonary Hypertension Therapeutics
	\$137,659	2	National Institute of Health	Angiotensin-converting Enzyme2 in Vascular Endothelial Function
<b>Maureen Keller-Wood</b>	\$304,164	3	National Institute of Health	Effects of Maternal Cortisol on Fetal and Neonatal Growth and Metabolism
	\$12,876	1	National Institute of Health	Paraventricular Nucleus Regulatory Mechanisms in Stress and Hypertension
	\$23,012	1	National Institute of Health	Renal Transporters and Fetal Neuroendocrinology
	\$239,923	1	National Institute of Health	The Baroreflex in Pregnancy: Effects of Adrenal and Placental Steroids

**PHARMACEUTICAL OUTCOMES AND POLICY**

<b>Faculty</b>	<b>Amount</b>	<b>Number</b>	<b>Agency</b>	<b>Project Title</b>
<b>Teresa Kauf</b>	\$3,000	1	Epilepsy Foundation of America	Cost and Quality of Care in Epilepsy: An Episode of Care Approach
	\$20,000	1	Research Triangle Institute	Benefit Risk Preferences among Psoriasis Patients
	\$25,000	1	Research Triangle Institute	Hepatitis C Virus Time Preference Conjoint Study
	\$8,600	2	Research Triangle Institute	Cost Impact of Treating with Atazanavir and Epzicom using Data from the ARIES Study
<b>Earlene Lipowski</b>	\$8,200	1	Agency for Health Care Administration	Evaluation of the Florida Medicaid Aged and Disabled Program
<b>Folakemi Odedina</b>	\$20,000	1	National Institute of Health	The Science of Global Prostate Cancer Disparities in Black Men Conference
<b>Thomas Smith</b>	\$56,625	1	Cephalon Inc.	Pharmacist Responsibility for Screening of Opioid use in Non-tolerant Patients
<b>Almut Winterstein</b>	\$200,488	1	Agency for Healthcare Research & Quality	Comparative Safety and Effectiveness of Stimulants in Medicaid Youth with ADHD
	\$847,841	2	Food and Drug Administration	Pharmaceutical Outcomes and Policy Training Program for Health Science Graduates



**PHARMACOTHERAPY & TRANSLATIONAL RESEARCH**

<b>Faculty</b>	<b>Amount</b>	<b>Number</b>	<b>Agency</b>	<b>Project Title</b>
<b>Rhonda Cooper-DeHoff</b>	\$114,846	2	National Institute of Health	Metabolic Effects of Antihypertensive Drugs
<b>Benjamin Epstein</b>	\$29,600	2	GlaxoSmithKline	Non-invasive Determination of Central Aortic Blood Pressure in Hypertensive Patients Treated with Controlled-release Carvedilol or Atenolol
<b>Reginald Frye</b>	\$4,200	1	Multiple Sponsors	Multiple Sponsors
	\$153,926	1	National Institute of Health	Metabolomics Network for Drug Response Phenotype
	\$82,565	2	National Institute of Health	Sex Differences in Acute Pain and Analgesic Responses: Psychosocial and Genetic
<b>John Gums</b>	\$371,700	1	Ortho McNeil Jansen Scientific Affairs	Ortho-McNeil Infectious Disease Prospective Outcomes Project
	\$200	1	Miscellaneous Donors	Electrolytes in Cardiovascular Disease
	\$514,418	1	Sanofi Aventis	VTE: Tracking Web Resource Thrombosis Service Program
<b>Leslie Hendeles</b>	\$193,583	7	Compleware Corporation	Pilot Study to Examine the Post-dose Changes in Exhaled Nitric Oxide (eNO) following Treatment with Fluticasone Propionate (FP)/Salmeterol (SAL) Combination Product Advair
	\$89,834	4	TKL Research	A Multi-center, Randomized, Double-blind Five-way Crossover Pharmacodynamics Study Comparing Perrigo's Albuterol Inhalation Aerosol to Teva's ProAir HFA Inhalation Aerosol using a Methacholine Challenge Design in Asthmatic Patients
	\$24,875	1	Watson Laboratories	A Double-blind, Randomized, Placebo-controlled, Single-dose Crossover Study of the Bronchoprotective Effect of Generic Levalbuterol Metered-dose Inhaler and Brand Levalbuterol Metered-dose Inhaler in Asthmatics
<b>Julie Johnson</b>	\$21,544	2	Cedars Sinai Medical Center	Women's Ischemia Syndrome Evaluation (WISE) Coronary Vascular Dysfunction
	\$2,234,823	2	National Institute of Health	Pharmacogenomic Evaluation of Antihypertensive Responses
	\$22,048	4	Nemours Children's Clinic	Nemours Children's Clinic

**PHARMACOTHERAPY & TRANSLATIONAL RESEARCH (cont.)**

<b>Faculty</b>	<b>Amount</b>	<b>Number</b>	<b>Agency</b>	<b>Project Title</b>
<b>Taimour Langae</b>	\$11,628	1	National Institute of Health	Effects of OA-related Pain on Telomere Length and Telomerase Activity
	\$8,139	1	National Institute of Health	Pharmacotoxicology of Trichloroethylene Metabolites
<b>John Markowitz</b>	\$306,918	1	National Institute of Health	Drug Transporters and the Disposition of ADHA Therapeutic Agents
<b>Charles Peloquin</b>	\$72,173	2	Center for Disease Control and Prevention	Pharmacokinetic and Pharmacodynamics Studies of Efficacy, Tolerability and Safety of Higher Dosage Rifapentine for Treatment of Tuberculosis
	\$22,479	1	Colorado State University	Agreement Between Charles Peloquin (UF) and Anne Lenaerts Assay Samples and Pharmacokinetic Data Analysis
	\$115,565	1	Gates Foundation	Pharmacokinetics and Pharmacodynamics of Sterilizing Activity Across Experimental TB Models
	\$105,732	2	Global Alliance for TB Drug Development	Pre-clinical Evaluation of New Drug Combinations Against Tuberculosis
	\$3,420	4	Multiple Sponsors	Multiple Sponsors
<b>James Taylor</b>	\$71,270	1	National Institute of Health	Pharmacokinetics and Pharmacodynamics of Antimicrobials in Animal Model
	\$120,000	1	Florida Department of Health	Pharmacy in Primary Care Program (AHEC Program)
	\$30,000	1	Florida Department of Health	AHEC Tobacco Training Cessation Program
<b>Issam Zineh</b>	\$14,159	1	National Institute of Health	Liver X Receptor - Alpha (LXRA)Gene Polymorphism in Heart Disease and Drug Response

# 23<sup>rd</sup> ANNUAL RESEARCH SHOWCASE AND AWARDS RECOGNITION DAY

THURSDAY, FEBRUARY 18<sup>th</sup>, 2010



UNIVERSITY OF FLORIDA  
COLLEGE OF PHARMACY

## A SPECIAL THANKS TO THIS YEAR'S SPONSORS

### DIAMOND SPONSOR

**Dr. Robert R. and Stephanie Ruffolo**  
Spring City, PA

### PLATINUM SPONSOR

**Drug & Biotechnology Development, LLC**  
Clearwater, FL  
Dr. Robert G. and Maria Bell; Class of 1988

### GOLD SPONSORS

**Dr. Robert C. Crisafi**  
Winchester, MA; Class of 1956

**DENALI BioTechnologies, LLC**  
Soldotna, AK  
Dr. Maureen McKenzie

**Dr. Robert A. and Phyllis Levitt**  
Gainesville, FL; Class of 1961

### SILVER SPONSORS

**Dr. Gwen (Victoria) De Leon**  
Orange Park, FL; Class of 1994  
with matching gift from Publix

**Dr. Tobias Gerhard**  
New Brunswick, NJ; Class of 2007

**Dr. H. Thomas Karnes**  
Richmond, VA; Class of 1984

**Dr. Teresa Kauf**  
Gainesville, FL; Faculty

**Dr. Jiang Liu**  
Rockville, MD; Class of 2009

**Dr. David W. Newton**  
Winchester, VA; Class of 1976

### SPONSORS

**Dr. Hao Zhu**  
Rockville, MA; Class of 2004

## SCHEDULE OF EVENTS

8:00am - 9:00am Set-up Poster Presentations (Reception Hall, HPNP Building)

### **POSTER COMPETITION**

9:00am - 11:30am **Poster Competition** – Students Present for Judging (Reception Hall, HPNP Building)

### **ORAL COMPETITION**

1:00pm - 1:10pm **Introduction** – Dr. William Millard, Executive Associate Dean (Room G-301, HPNP Building)

**Levitt Division** (20 minute presentations)

1:10pm - 1:30pm Ayad Ali  
1:30pm - 1:50pm Stephan Linden

**Junior Division** (15 minute presentations)

1:55pm - 2:10pm Jay Schaub  
2:10pm - 2:25pm Huong Le  
2:25pm - 2:40pm Erica Haslach

2:40pm - 2:50pm **BREAK**

**Senior Division** (20 minute presentations)

2:55pm - 3:15pm Jason Kwan  
3:15pm - 3:35pm Mohamed Eslam Mohamed  
3:35pm - 3:55pm Benjamin Wu

4:00pm - 5:15pm **Keynote Address** – A. Waseem Malick, Ph.D., Vice President, Pharmaceutical & Analytical Research & Development, Hoffman-LaRoche, Inc. *Drug Delivery – Past Present & Future “A Personal Perspective”* (Room G-101, HPNP Building)

5:30pm - 7:00pm **Awards Reception** – Refreshments and Announcement of Winners (Reception Hall, HPNP Building)

## ORAL COMPETITION

### **LEVITT DIVISION**

#1 Presenter: **Ayad Ali**  
Department: Pharmaceutical Outcomes and Policy  
Research Title: Pharmacovigilance Study for Postmarketing Safety Evaluation of Aliskiren Hemifumarate, a New Molecular Entity

#2 Presenter: **Stephan Linden**  
Department: Pharmaceutical Outcomes and Policy  
Research Title: Do Central Nervous System Stimulants Affect the Number of Driving Accidents in Adolescents with Attention-Deficit/Hyperactivity Disorder?

### **JUNIOR DIVISION**

#1 Presenter: **Jay Schaub**  
Department: Pharmacodynamics  
Research Title: Onset of Increased Adiposity of the Melanocortin-3 Receptor Knockout Mouse is Prevented by Voluntary Exercise

#2 Presenter: **Huong Le**  
Department: Pharmaceutics  
Research Title: Effect of Gelsolin and AAT Therapy on Brain Injury caused by Stroke

#3 Presenter: **Erica Haslach**  
Department: Pharmacodynamics  
Research Title: Determination of Unique AGRP and MC4R Interactions: Use of Stereochemical Modifications of Ligands and Receptor Mutagenesis

### **SENIOR DIVISION**

#1 Presenter: **Jason Kwan**  
Department: Medicinal Chemistry  
Research Title: Grassystatins A-C from Marine Cyanobacteria, Potent Cathepsin E Inhibitors that Reduce Antigen Presentation

#2 Presenter: **Mohamed Eslam Hohamed**  
Department: Pharmacotherapy & Translational Research  
Research Title: Screening for Unidentified Herb-drug Interactions: Looking Beyond Cytochrome P450

#3 Presenter: **Benjamin Wu**  
Department: Pharmaceutics  
Research Title: Population Pharmacokinetic/Pharmacodynamic and Linear Regression Models for Type 2 Diabetes

## POSTER COMPETITION

- # 1 Nationwide Policies Surrounding Palivizumab (Synagis®) Utilization in Medicaid**  
Presenter: Nerissa Alday (Pharm. Outcomes & Policy/Pharmacy Student)  
Authors: N Alday, C Hampp, A Winterstein
- # 2 Clinical Association of Variation in the  $\beta 2$  Regulatory Subunit of the Voltage-gated Calcium (CACNB2) with Outcomes in Hypertensive Coronary Artery Disease (CAD) Patients**  
Presenter: Bryan Allen (Jacksonville Campus/Pharmacy Student)  
Authors: B Allen, H Davis, Y Gong, R Cooper-DeHoff, C Pepine, J Johnson
- # 3 Synthesis and Chemical Hydrolysis of Dextran-Methylprednisolone Conjugates as Ophthalmic Prodrug**  
Presenter: Isabel Andueza (Pharmaceutics/Pharmacy Exchange Student)  
Authors: I Andueza, J Rocca, G Hochhaus
- # 4 A Correlation between Concomitant Medications and Dose Limiting Toxicities or Severe Adverse Effects in Phase 1 Clinical Trials of Targeted Antineoplastic Agents**  
Presenter: Jason Ferreira (St. Pete Campus/Pharmacy Student)  
Authors: R Lush, J Ferreira
- # 5 The Impact of CACNA1C Variants on New Onset Diabetes in the INVEST Trial**  
Presenter: Allison George (Pharm. & Translational Research/Pharmacy Student)  
Authors: A George, J Karnes, Y Gong, T Langae, L Stauffer, B Burkley, C Pepine, J Johnson, R Cooper-DeHoff
- # 6 Aromatase Genotypeis Associated with Outcomes in the International Verapamil SR/Trandolapril Study (INVEST)**  
Presenter: Megan Hames (Pharm. & Translational Research/Pharmacy Student)  
Authors: M Hames, G Welder, J Wittmann, R Cooper-DeHoff, C Pepine, J Johnson, A Beitelshes
- # 7 Potential Benefits of Warfarin Monitoring by a Clinical Pharmacist in a Long Term Care Facility**  
Presenter: Kelly Jones (Jacksonville Campus/Pharmacy Student)  
Authors: C Motycka, K Jones
- # 8 Oral Counseling Practices in U.S. Community Pharmacies**  
Presenter: Allison Newland Jamison (Pharm. Outcomes & Policy/Pharmacy Student)  
Authors: A Newland Jamison, S Linden, C Kimberlin, A Winterstein

## POSTER COMPETITION (cont.)

- # 9 Overload and Redundancy in Consumer Medication Information**  
Presenter: Allison Jamison (Pharm. Outcomes & Policy/Pharmacy Student)  
Authors: A Jamison, A Winterstein, C Kimberlin
- # 10 Binge Ethanol Exposure Increases Ethanol Preference under Free Access Choice Conditions**  
Presenter: Brian McCullough (Pharmacodynamics/Pharmacy Student)  
Authors: B McCullough, D Accaputo, N Rhodes, D Wallenfang, S Eckels, S Rohlbuller, J Bryan, A Zharikova, J Peris
- # 11 The Effects of Binge Ethanol Exposure on Initiation and Maintenance of Operant Responding for Ethanol Gel**  
Presenter: Nathaniel Rhodes (Pharmacodynamics/Pharmacy Student)  
Authors: N Rhodes, D Wallenfang, B McCullough, D Accaputo, S Eckels, S Rohlbuller, J Bryan, A Zharikova, J Peris
- # 12 Noninvasive Measurement of Central Aortic Blood Pressure in Hypertensive Patients Treated with Controlled-release Carvedilol or Atenolol**  
Presenter: Niren Shah (Pharm. & Translational Research/Pharmacy Student)  
Authors: B Epstein, W Nichols, N Shah, H Hall
- # 13 Hepatitis B Reactivation and Rituximab in the Oncology Practice**  
Presenter: Jeryl Villadolid (Pharm. & Translational Research/Pharmacy Student)  
Authors: J Villadolid, K LaPlant, M Markham, T George
- # 14 Association of OPG and CIP2A Polymorphisms with Bisphosphonate Associated Osteonecrosis of the Jaw**  
Presenter: Justin Wasko (Pharm. & Translational Research/Pharmacy Student)  
Authors: J Wasko, O Casanova, Y Gong, J Katz, J Moreb, J Johnson, T Langae
- # 15 Celecoxib Modulation of Estrogen Sulfonation**  
Presenter: Sriram Ambadapadi (Medicinal Chemistry/Graduate Student)  
Authors: S Ambadapadi, M James
- # 16 Potential Therapeutic Treatment of Doxorubicin-induced Cardiomyopathy**  
Presenter: Erin Bruce (Pharmacodynamics/Graduate Student)  
Authors: E Bruce, D Ely, S Ma, M Raizada, M Katovich

**POSTER COMPETITION (cont.)**

- # 17 Cystatin C Released Post Neuronal Injury is Important for Microglial Activation**  
Presenter: Garima Dutta (Pharmacodynamics/Graduate Student)  
Authors: G Dutta, P Zhang, D Barber, B Liu
- # 18 Effects of Plasma Protein Binding on Half-life of Elimination**  
Presenter: Daniel Gonzalez (Pharmaceutics and Pharm. & Translational Research/Graduate Student)  
Authors: D Gonzalez, S Schmidt, H Derendorf
- # 19 Age-related Changes in Expression and Activity of Glutathione Transferase Zeta (GSTz) I Human Liver**  
Presenter: Yuan Gu (Medicinal Chemistry/Graduate Student)  
Authors: Y Gu, W Li, R Hines, P Stacpoole, M James
- # 20 Effects of Novel 5HT2 Modulators on Extracellular Neurotransmitter Levels in the Striatum**  
Presenter: James Kasper (Pharmacodynamics/Graduate Student)  
Authors: J Kasper, Z Sun, R Booth, J Peris
- # 21 Age-related Risk for RSV Hospitalizations in Premature Children – Are Updated AAP Guidelines Appropriate?**  
Presenter: Caitlin Knox (Pharm. Outcomes & Policy/Graduate Student)  
Authors: C Knox, C Hampp, A Winterstein
- # 22 Rasch Analysis of Hall's Professional Model**  
Presenter: Christine Lee (Pharm. Outcomes & Policy/Graduate Student)  
Authors: C Lee, R Segal, C Velozo, B Choi
- # 23 Novel Bioactive Cyclodepsipeptides from a Marine Cyanobacterium from Guam**  
Presenter: Rana Montaser (Medicinal Chemistry/Graduate Student)  
Authors: R Montaser, K Abboud, V Paul, H Luesch
- # 24 Tissue Distribution Studies of an Investigational New Antibiotic using Microdialysis**  
Presenter: Runa Naik (Pharmaceutics/Graduate Student)  
Authors: R Naik, R Singh, H Derendorf

**POSTER COMPETITION (cont.)**

- # 25 Validity of an Algorithm for the Identification of Premature Infants using Medicaid Administrative Data**  
Presenter: Efe Odia (Pharm. Outcomes & Policy/Graduate Student)  
Authors: E Odia, C Hampp, A Winterstein
- # 26 Nanocomposite Inhaled Corticosteroid Particles for Asthma Therapy**  
Presenter: Gina Patel (Pharmaceutics/Graduate Student)  
Authors: G Patel, G Hochhaus
- # 27 Effects of Alpha 7 Nicotinic Receptor Gene Delivery on Processes Underlying Cell Viability and Cell Differentiation**  
Presenter: Yan Ren (Pharmaceutics/Graduate Student)  
Authors: Y Ren, L Zhang, E Meyer, J Hughes, S Song
- # 28 Evaluation of Tissue Distribution of TR-701 in Healthy Volunteers, Using Microdialysis**  
Presenter: Martina Sahre (Pharmaceutics/Graduate Student)  
Authors: M Sahre, S Sabarinath, M Grant, C Seubert, C deAnda, H Derendorf
- # 29 Dereplication and Discovery of Secondary Metabolites from Marine Cyanobacteria *Symploca* sp**  
Presenter: Lilibeth Salvador (Medicinal Chemistry/Graduate Student)  
Authors: L Salvador, V Paul, H Luesch
- # 30 Marine Drug Discovery in the Dry Tortugas**  
Presenter: Gudrun Schlegel (Medicinal Chemistry/Graduate Student)  
Authors: G Schlegel, L Salvador, L Angermeier, H Luesch
- # 31 Fixed Dosing versus Body Size-based Dosing of Therapeutic Protein and Peptides in Adults**  
Presenter: Rong Shi (Pharmaceutics/Graduate Student)  
Authors: R Shi, C Li, K Parivar, S Zhang, H Derendorf, D Wang
- # 32 Development and Validation of HPLC-UV Method for Quantification of Triamcinolone Acetonide in Rat Plasma and Microdialysate**  
Presenter: Manuela de Lima Toccafondo Vieira (Pharmaceutics/Graduate Student)  
Authors: M Vieira, H Derendorf

**POSTER COMPETITION (cont.)**

**# 33 Activation of the Antioxidant Response Element by Specific Oxidized Metabolites of Linoleic Acid**

Presenter: Rui Wang (Medicinal Chemistry/Graduate Student)  
Authors: R Wang, J Kern, T Goodfriend, D Ball, H Luesch

**# 34 Simulation-based evaluation of  $T_{max}$  as a Pharmacokinetic Parameter to Assess Bioequivalence of Inhaled Corticosteroids**

Presenter: Benjamin Weber (Pharmaceutics/Graduate Student)  
Authors: B Weber, N Goyal, G Hochhaus

**# 35 Is Antiepileptic Drug Use Associated with Suicidality in Patients with Epilepsy?**

Presenter: Xuerong (Sheron) Wen (Pharm. Outcomes & Policy/Graduate Student)  
Authors: X Wen, K Meador, D Loring, S Eisenschenk, A Hartzema

**# 36 Characteristics of Current Pharmacist Immunization Practices in Florida**

Presenter: Bingcao Wu (Pharm. Outcomes & Policy/Graduate Student)  
Authors: E Lipowski, B Wu, K Whalen

**# 37 Pharmacokinetic Study of Thermosensitive Liposome-encapsulated Lomustine in C6 Glioma Model Rats**

Presenter: Luning Zhuang (Pharmaceutics/Graduate Student)  
Authors: L Zhuang, J Gao, H Derendorf, C Liu

**# 38 Do Central Nervous System Stimulants Affect the Number of Driving Accidents in Adolescents with Attention-Deficit/Hyperactivity Disorder?**

Presenter: Stephan Linden (Pharm. Outcomes & Policy/Graduate Student)  
Authors: S Linden, A Winterstein, K Wörtz, L Huazhi

**# 39 The Mode of action of Apratoxin A**

Presenter: Yanxia Liu (Medicinal Chemistry/Post-doctoral Fellow)  
Authors: Y Liu, B Law H Luesch

**# 40 Polymorphisms in Genes Coding for GRK2 and GRK5 and Response Differences in Treated Hypertensive Patients**

Presenter: Maximilian Lobmeyer (Pharm. & Translational Research/Post-doctoral Fellow)  
Authors: M Lobmeyer, L Wang, A Beitelshes, A Chapman, J Gums, E Boerwinkle, S Turner, R Cooper-DeHoff, C Pepine, J Johnson

**POSTER COMPETITION (cont.)**

**# 41 The Effect of Lysophospholipid on Cationic Lipid-based siRNA Delivery System**

Presenter: Guoqin Niu (Pharmaceutics/Post-doctoral Fellow)  
Authors: G Niu, H Derendorf, J Hughes

**# 42 Structural Characterization of the Potent and Selective Peptide-Peptidomimetic Hybrid Melanocortin Receptor Analogues**

Presenter: Anamika Singh (Pharmacodynamics/Post-doctoral Fellow)  
Authors: A Singh, J Holder, A Wilczynski, R Witek, A Edison, C Haskell-Luevano

**# 43 Effects of Melanocortin Receptor Stimulation on the Renin-Angiotensin System**

Presenter: Hua Yao (Pharmacodynamics/Post-doctoral Fellow)  
Authors: H Yao, A Andreasen, J Schaub, C Haskell-Luevano

## JUDGES

### POSTER COMPETITION

**John Abernethy, M.D.**

Medical Director  
Nanotherapeutics, Inc.  
Alachua, FL

**Rachel Hrabchak, PharmD**

Clinical Assistant Professor  
Department of Pharmacotherapy and  
Translational Research  
College of Pharmacy  
University of Florida

**Carol Kobulnicky, Ph.D.**

Associate Professor  
Department of Pharmacy Administration  
College of Pharmacy  
University of Wyoming

**Burcin Unel, Ph.D**

Clinical Assistant Professor  
Department of Pharmaceutical  
Outcomes and Policy  
College of Pharmacy  
University of Florida

**Karen Whalen, PharmD**

Regional Director, WPPD Program  
Department of Pharmacotherapy and  
Translational Research  
College of Pharmacy  
University of Florida

**Haojie Zhu, Ph.D.**

Clinical Assistant Professor  
Department of Pharmacotherapy and  
Translational Research  
College of Pharmacy  
University of Florida

### ORAL COMPETITION

**A. Waseem Malick, Ph.D.**

Vice President  
Pharmaceutical & Analytical  
Research and Development  
Hoffman-LaRoche, Inc.  
Nutley, NJ

**Folakemi T. Odedina, Ph.D.**

Professor, Department of Pharmaceutical  
Outcomes and Policy  
College of Pharmacy  
Director, Community Outreach &  
Minority Affairs  
Prostate Disease Center  
Department of Urology  
College of Medicine  
University of Florida

**Robert R. Ruffolo, Jr., Ph.D.**

Retired President  
Research and Development  
Wyeth Corporation  
Spring City, PA

**Nicholas Simpson, M.D.**

Assistant Professor  
Department of Endocrinology  
College of Medicine  
University of Florida